

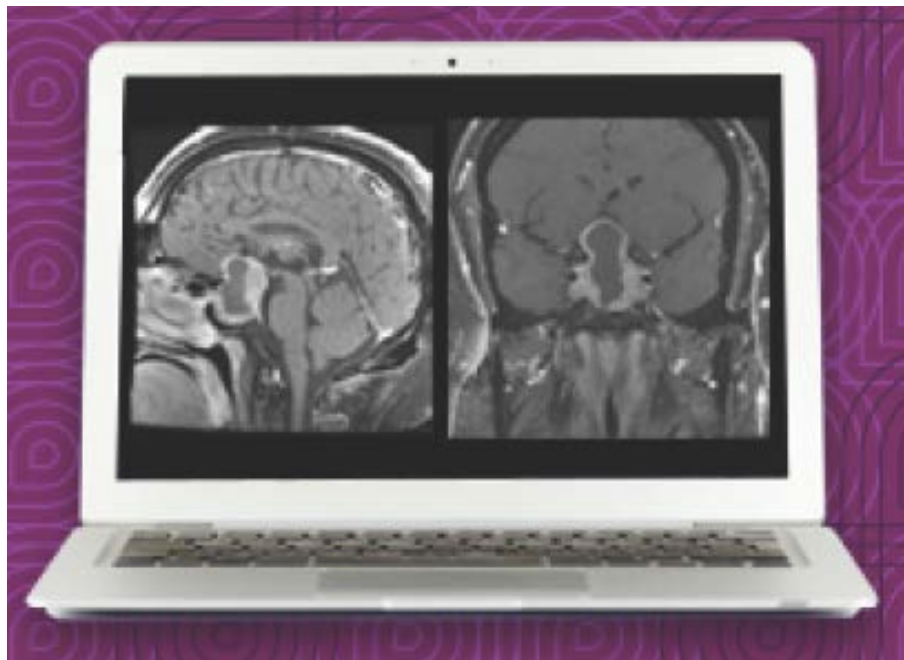
UPMC LIFE
CHANGING
MEDICINE
PITUITARY CENTER OF EXCELLENCE

PRESENTS

**MULTIDISCIPLINARY MANAGEMENT
OF PITUITARY TUMORS**

VIRTUAL UPDATE

May 1-16, 2021



Sponsored by:
University of Pittsburgh School of Medicine
Center for Continuing Education in the Health Sciences
Department of Neurological Surgery
Division of Endocrinology and Metabolism

MULTIDISCIPLINARY MANAGEMENT OF PITUITARY TUMORS
VIRTUAL UPDATE
May 1~16, 2021

Learn the most up-to-date evaluation and management strategies for non-functioning pituitary adenomas, hyperprolactinemia, Cushing's Disease and acromegaly at your convenience!

Program Overview and Learning Objectives

Participants will be able to understand the role of and advances in the medical and surgical management of pituitary lesions and other conditions that affect the pituitary. This will include in depth discussions of:

- Surgery (Endoscopic Endonasal Approach)
- Medical Therapy
- Radiation Treatment (Radiosurgery)
- Perioperative/Postoperative Management

Upon completion, participants should be able to diagnose and manage:

- Common pituitary tumors (prolactinomas and non-functioning tumors)
- Less common secretory tumors (acromegaly and Cushing's)
- Rare pituitary tumors and autoimmune conditions

Target Audience

This conference is designed for physicians, advanced practice practitioners, nurses, and other health care professionals from:

- Endocrinology and Metabolism
- Family Practice
- General and Internal Medicine
- Medical Oncology
- Neurology
- Neurosurgery
- Obstetrics and Gynecology
- Ophthalmology
- Radiation Oncology

Accreditation and Credit Designation Statements

In support of improving patient care, the University of Pittsburgh is jointly accredited by the Accreditation Council for Continuing Medical Education (ACCME), the Accreditation Council for Pharmacy Education (ACPE), and the American Nurses Credentialing Center (ANCC), to provide continuing education for the healthcare team.

Physician (CME)

The University of Pittsburgh designates this live activity for a maximum of 9.0 *AMA PRA Category 1 Credits™*. Physicians should claim only the credit commensurate with the extent of their participation in the activity.

Nursing (CNE)

The maximum number of hours awarded for this Continuing Nursing Education activity is 9.0 contact hours.

Physician Assistant (AAPA)

The University of Pittsburgh has been authorized by the American Academy of PAs (AAPA) to award AAPA Category 1 CME credit for activities planned in accordance with AAPA CME Criteria. This activity is designated for 9.0 AAPA Category 1 CME credits. PAs should only claim credit commensurate with the extent of their participation.

Other Healthcare Professionals

Other health care professionals will receive a certificate of attendance confirming the number of contact hours commensurate with the extent of participation in this activity.

Disclaimer Statement

The information presented at this CME program represents the views and opinions of the individual presenters, and does not constitute the opinion or endorsement of, or promotion by, the UPMC Center for Continuing Education in the Health Sciences, UPMC / University of Pittsburgh Medical Center or Affiliates, and the University of Pittsburgh School of Medicine. Reasonable efforts have been taken intending for educational subject matter to be presented in a balanced, unbiased fashion and in compliance with regulatory requirements. However, each program attendee must always use his/her own personal and professional judgement when considering further application of this information, particularly as it may relate to patient diagnostic or treatment decisions including, without limitation, FDA-approved uses and any off-label uses.

Faculty Disclosure

All individuals in a position to control the content of this educational activity including members of the planning committee, speakers, presenters, authors, and/or content reviewers have disclosed all relevant financial relationships with any entity producing, marketing, re-selling, or distributing health care goods or services used on, or consumed by, patients. The following relevant financial relationships were disclosed:

Pouneh Fazeli, MD
Consultant: Regeneron
Consultant: Strongbridge Biopharma

Paul A. Gardner, MD
Consultant: Peter Lazic US, Inc.
Consultant: SPIWay, LLC

Ajay Niranjani, MD
Grant/Research Support: International Radiosurgery Research Foundation
Consultant: International Radiosurgery Research Foundation

No other planners, members of the planning committee, speakers, presenters, authors, content reviewers and/or anyone else in a position to control the content of this educational activity have relevant financial relationships to disclose.

FACULTY

Pouneh K. Fazeli, MD, MPH

Associate Professor of Medicine

Division of Endocrinology and Metabolism

University of Pittsburgh School of Medicine

Director, UPMC Neuroendocrinology Unit

fazelipk@upmc.edu

Paul A. Gardner, MD

Peter J. Jannetta Endowed Chair in Neurological Surgery

Professor, Departments of Neurological Surgery and Otolaryngology

University of Pittsburgh School of Medicine

Neurosurgical Director, UPMC Center for Cranial Base Surgery

gardpa@upmc.edu

Hussain Mahmud, MD

Clinical Assistant Professor of Medicine

Division of Endocrinology and Metabolism

University of Pittsburgh School of Medicine

Associate Program Director, UPMC Endocrinology, Diabetes and Metabolism Fellowship

mahmudh@upmc.edu

Ajay Niranjana, MD

Professor of Neurological Surgery

University of Pittsburgh School of Medicine

Associate Director, UPMC Center for Image-Guided Neurosurgery

niranjana@upmc.edu

William E. Rothfus, MD, MBA

Clinical Professor of Radiology

University of Pittsburgh School of Medicine

rothfuswe@upmc.edu

S. Tonya Stefko, MD

Associate Professor of Ophthalmology, Otolaryngology, and Neurological Surgery

University of Pittsburgh School of Medicine

Director, UPMC Oculoplastic, Aesthetic and Reconstructive Surgery Service

stefkost@upmc.edu

Georgios A. Zenonos

Assistant Professor of Neurological Surgery

University of Pittsburgh School of Medicine

Associate Director, UPMC Center for Cranial Base Surgery

Zenonosg2@upmc.edu

ON DEMAND LECTURES

The following lectures will be available for registered attendees to view at their convenience online from May 1-16, 2021 at: [Virtual Pituitary Tumor Update | University of Pittsburgh](#)

Introduction and Overview <i>Paul A. Gardner, MD</i>	12 Minutes
Imaging of the Pituitary: What the Clinicians Need to Know <i>William E. Rothfus, MD, MBA</i>	53 Minutes
Diagnosis and Management of Acromegaly <i>Pouneh Fazeli, MD, MPH</i>	24 Minutes
Diagnosis and Management of Cushing's <i>Pouneh Fazeli, MD, MPH</i>	40 Minutes
Hyperprolactinemia: A Case-Based Approach <i>Pouneh Fazeli, MD, MPH</i>	44 Minutes
Visual Evaluation of Pituitary Tumors <i>S. Tonya Stefko, MD</i>	24 Minutes
Perioperative Management of the Pituitary Surgery Patient <i>Hussain Mahmud, MD</i>	41 Minutes
Surgical Management of Non-Functioning Pituitary Adenomas and Parasellar Tumors <i>Paul A. Gardner, MD</i>	49 Minutes
Endoscopic Endonasal Surgery for Functioning Pituitary Adenomas <i>Georgios A. Zenonos, MD</i>	44 Minutes
Radiosurgery: A Key Adjunct for Pituitary Tumors <i>Ajay Niranjana, MD</i>	28 Minutes
Management of Hypopituitarism <i>Hussain Mahmud, MD</i>	63 Minutes

LIVE INTERACTIVE SESSIONS

FRIDAY, MAY 7, 2021

12:00 – 1:00 PM Q&A/Ask the Experts/Case Presentations *
Moderator: Paul Gardner, MD
Link: <https://pitt.zoom.us/j/92987699071>
Meeting ID: 929 8769 9071

FRIDAY, MAY 14, 2021

12:00 – 1:00 Q&A/Ask the Experts/Case Presentations *
Moderator: Pouneh Fazeli, MD
Link: <https://pitt.zoom.us/j/98356065954>
Meeting ID: 983 5606 5954

During these two live Tumor Board sessions, which will be by Zoom, registrants will have the opportunity to connect, pose questions and present cases for discussion with the faculty.

To join the session, simply click on the link listed under each date. If you encounter any difficulties joining the broadcast, please do not hesitate to contact our conference manager, Mary Jo Tutchko, by phone (412-647-8186) or email (tutchkomj@upmc.edu).

VIRTUAL EXHIBITS

We gratefully acknowledge exhibit support from the following for this activity:

- Recordati Rare Disease

UPMC
University of Pittsburgh School of Medicine
Center for Continuing Education in the Health Sciences

Multidisciplinary Management of Pituitary Tumors VIRTUAL
Update
May 1 - 16, 2021
Virtual Conference

This is not your official certificate.

How to receive your continuing education credit?

<https://cce.upmc.com/multidisciplinary-management-pituitary-tumors>

This activity is approved for the following credit: *AMA PRA Category 1 Credit™*, ANCC, and AAPA Category 1 CME. Other health care professionals will receive a certificate of attendance confirming the number of contact hours commensurate with the extent of participation in this activity.

To receive credit, you will be required to login, complete the course evaluation and claim credit within 30 days of the activity. If you are a new user, click “Register” to create a new account. The activity will be added to your Pending Activities and accessible on the first day of the activity. Upon completion, certificates will be available to download and stored for future reference in your Completed Activities.

How to receive your official certificate?

To receive credit, login to the UPMC Center for Continuing Education in the Health Sciences (CCEHS) continuing education learning portal, <http://cce.upmc.com>. If you are a new user, choose “Register” to create an account. **Note, records are matched to users by email address.**

- Go to **My Account, My Courses**
- Choose **Pending Activities**
- Click on the **course title** to complete the course evaluation and claim credit