



India: Pancreatitis Working Groups and Activities



Rupjyoti Talukdar

Director, Pancreas Clinic

Clinical Pancreatologist & Clinician Scientist

**Head, Pancreas Research Group and Division of
Microbiome research** (*Wellcome-DBT Labs.*)

Asian Healthcare Foundation/Asian Healthcare Foundation
Hyderabad.

rup_talukdar@yahoo.com

.....the next 7 mins



- ❖ Research sample
- ❖ What we see
- ❖ Our vision
- ❖ How we do
- ❖ Our team



PancreasFest 2019; 26th July, 2019



.....our research sample



.....what we see



- ❖ Total patient turnover in the Pancreas Clinic in last one year (268 working days):
5404 pancreatic diseases
- ❖ **>95%** pancreatitis
- ❖ **~ 50%** each of acute and chronic pancreatitis
- ❖ **~ 35-40%** new patients

N=804

AP
(n= 426)

9.6%

CP
(n=177)

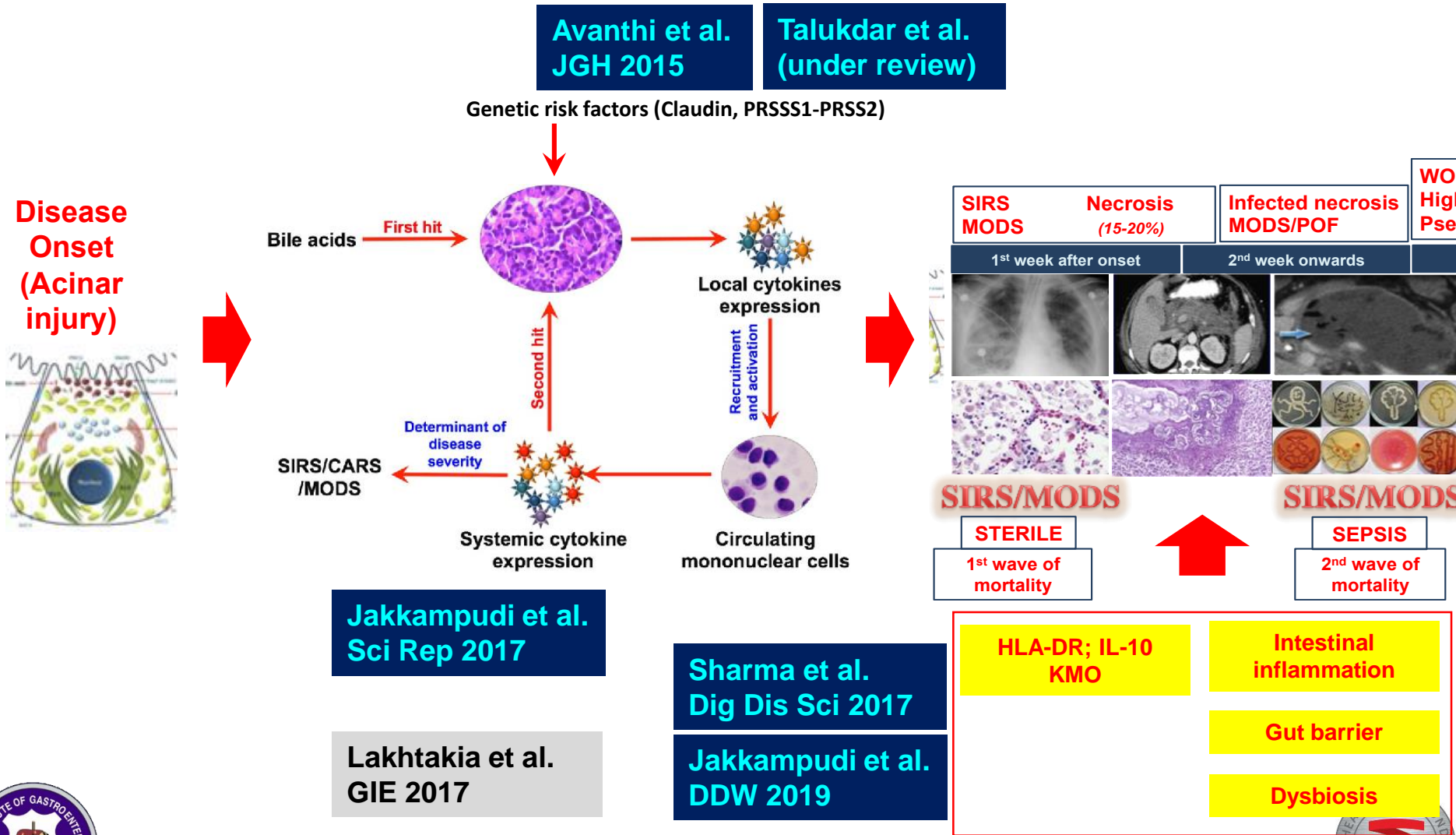
36%

RAP
(n= 378)

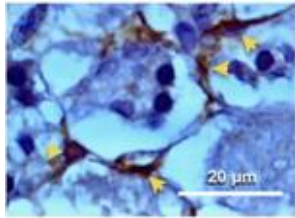
Manuscript under preparation



..... our vision



..... our vision

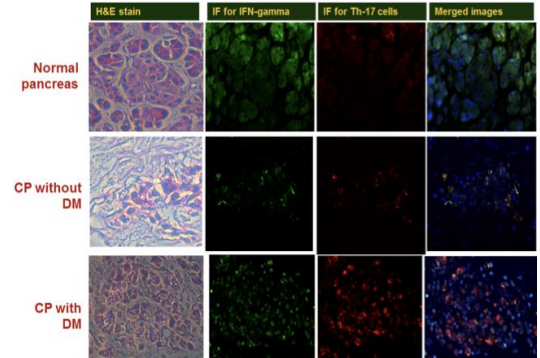


Talukdar et al.
Pancreas 2016

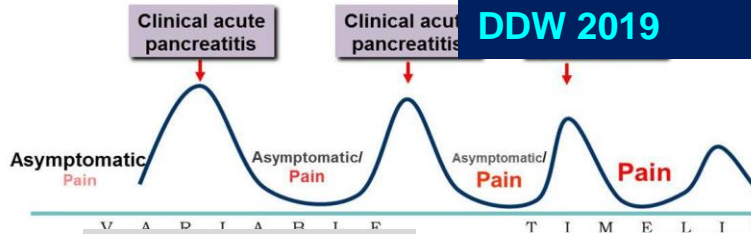
Th cell
infiltration

Mitnala et al.
UEGJ 2018

Bach2
repression



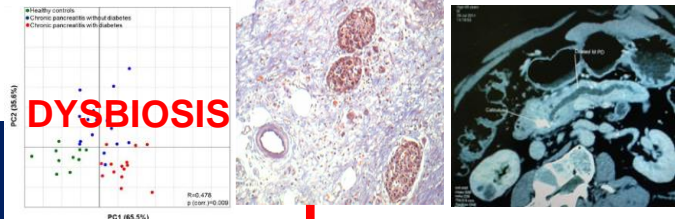
Progressive fibrosis



Galande et al.
DDW 2019

Burnt out
disease

Jandhyala et al.
Sci Rep 2017



Talukdar et al.
DDW 2018
Presubmission

Tandan et al.
2019 in revision

Tandan et al.
GIE 2013

Agarwal et al.
GIE 2014

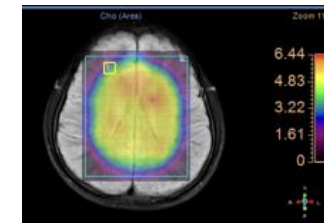
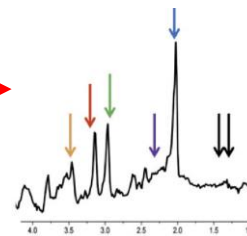
Psychological
dysfunction

Exocrine &
endocrine
dysfunction

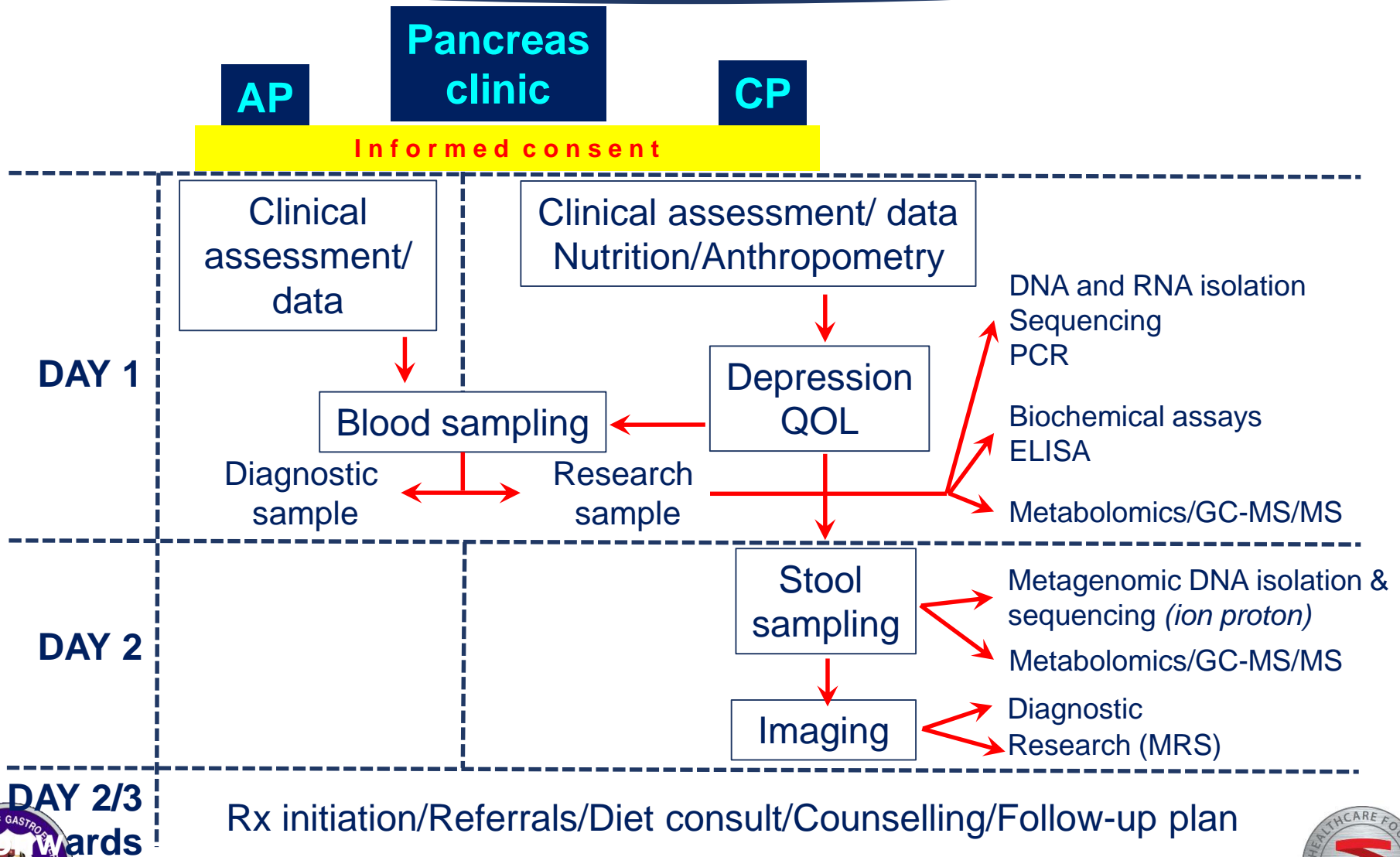
Complex pain
patterns

Sarkar et al.
DDW 2018

Sarkar et al.
DDW 2019



..... how we do



..... our team

Wellcome DBT Labs

Clinical

Subhaleena Sarkar (Research Fellow)
Misbah Unnisa (Research Fellow)
Chandrakanth (GI Fellow)
Avadh Patel (GI Fellow)
Revanth K (Consultant Radiologist)
Rajesh Goud (Research Co-ordinator)

Research labs

Priyanka Sarkar (Post Doc)
Aparna Jakkampudi (PhD scholar)
Subhaleena Sarkar (Research Fellow)
Mojibur Rahman (Collaborator)
Mridusmita Dehingya (Collaborator)

Genetics labs

Ravi Kanth VV (Lead)
Steffie Avanthi (PhD scholar)
Govardhan Bale (PhD Scholar)
Vishesh Chandra (Research Fellow)

Islet labs

Sasikala Mitnala (Lead)
Pavan Kumar (Scientist)
Ratnakar Reddy (Post doc)
Sheetal Galande (PhD scholar)



..... our team

Advanced endoscopy team

Manu Tandan
Sundeeep Lakhtakia
Rajesh Gupta
Mohan Ramchandani
Rakesh Kalapala
Jagangeer Basha
Zaheer Nabi

Surgical team

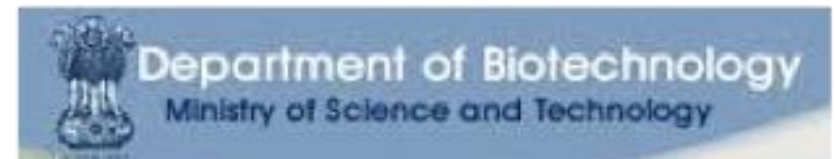
GV Rao
R Pradeep

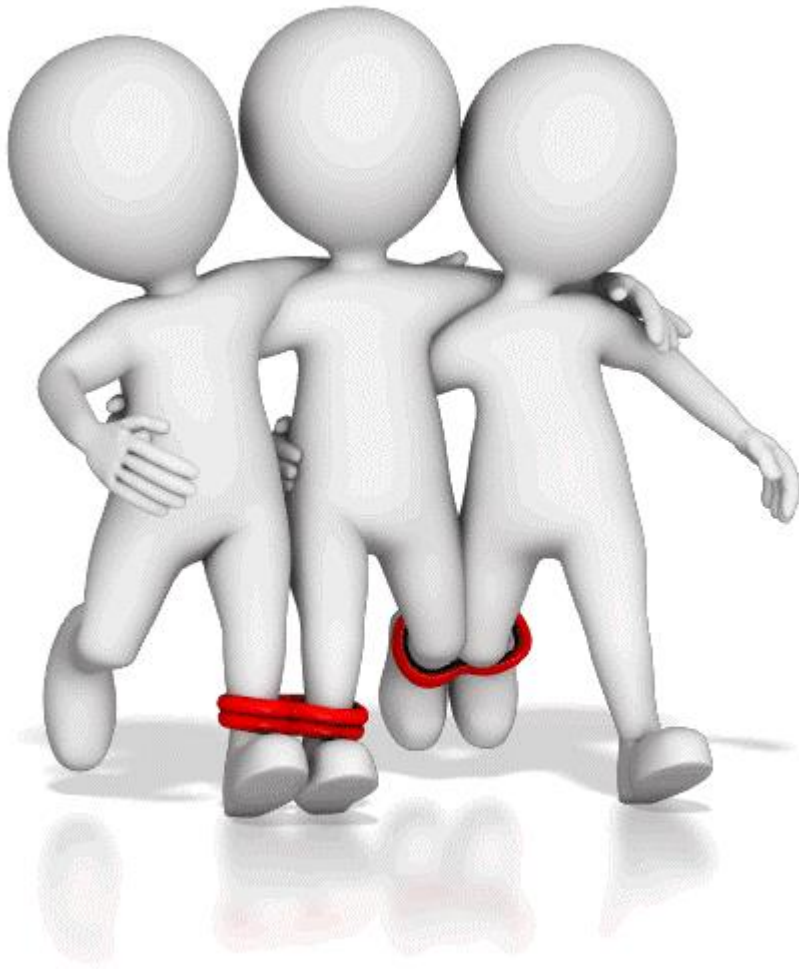
Research advisors

D. Nageshwar Reddy
GV Rao
PN Rao
Harigopal B

Research team other than pancreas

Mithun Sharma
Anand Kulkarni
Pramod Kumar
Bala Kumar Reddy
Ranjeet Tokala
Sashidhar Rao
Krishna Reddy
Renuka G
Ambika





Thanks for your
attention!