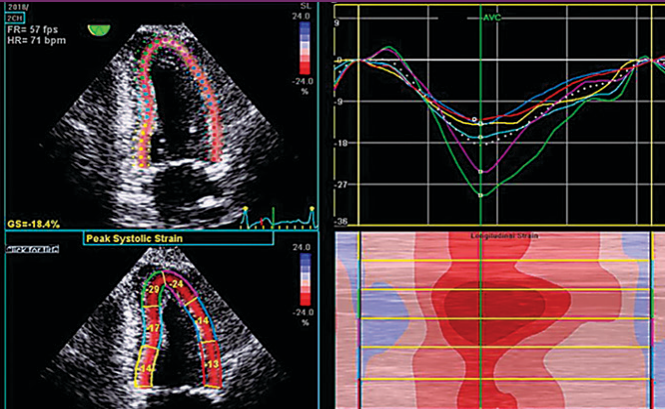


UPMC CARDIO-ONCOLOGY AND CARDIAC IMAGING SYMPOSIUM

Herberman Conference Center
UPMC Shadyside



Saturday, Jan. 11, 2020
7:00 a.m — 3:00 p.m.

Sponsored by the

UPMC Heart and Vascular Institute and the
University of Pittsburgh School of Medicine
Center for Continuing Education in the Health Sciences

Course Directors

Matthew Harinstein, MD, FACC, FASE, FASNC

Vice President, Medical Affairs, UPMC McKeesport
Co-Director, Noninvasive Imaging, UPMC Shadyside
UPMC Heart & Vascular Institute
Senior Vice President and Associate Chief Medical Officer
UPMC International

William Katz, MD, FACC, FASE

Associate Professor of Medicine
University of Pittsburgh School of Medicine
Director of Echocardiography, UPMC Presbyterian
UPMC Heart and Vascular Institute

Flordeliza Villanueva, MD, FACC, FAHA

Professor of Medicine
Vice Chair for Pre-Clinical Research,
Department of Medicine
Director, Center for Molecular Imaging &
Image-Guided Therapeutics
University of Pittsburgh School of Medicine
Director, Non-Invasive Cardiovascular Imaging
UPMC Heart and Vascular Institute

Notable Faculty

Jean-Bernard Durand, MD, FACP, FCCP, FACC, FHSA

Medical Director, Cardiomyopathy Services
Director, Cardiovascular Genetics Research
Director, Cardiology Fellowship Program
MD Anderson Cancer Center
Associate Professor of Medicine
The University of Texas MD Anderson Cancer Center

Samir Saba, MD

Professor of Medicine
University of Pittsburgh School of Medicine
Co-Director
UPMC Heart and Vascular Institute

Prem Soman, MD, PhD, FRCP (UK), FACC

Associate Professor of Medicine (Cardiology), Clinical and Translational Science
University of Pittsburgh
Director, Cardiac Amyloidosis Center
Director, Nuclear Cardiology
UPMC Heart and Vascular Institute

OVERVIEW

This one-day CME event will feature a wide range of topics on the rising specialty of cardio-oncology within the cardiology and oncology environments. Drawing on the expertise of the UPMC Center for Cardio-Oncology, this event aims to educate and provide knowledge to better care for patients with these conditions. The afternoon session will focus on advanced echo imaging in the role of structural heart interventions associated with mitral valve regurgitation and atrial fibrillation as well as developing applications of microbubble contrast.

Objectives

- Improve knowledge regarding prevention and treatment of cardiovascular complications of cancer-related therapies.
- Understand the use of non-invasive imaging to prevent and detect cancer therapy related cardiac dysfunction.
- Develop a better understanding of diagnosis and treatment of cardiac amyloidosis, including the use of novel imaging techniques and new therapeutic treatment options.
- Improve knowledge regarding the role of echo in evaluating candidates and guiding therapy for structural heart interventions.
- Understand the use of microbubble contrast in the echo lab and potential future applications.

Who Should Attend

This course is designed for cardiologists (both invasive and non-invasive), cardiac surgeons, hematologists, oncologists, and primary care providers as well as advanced practice providers, nurses, technologists, and other interested health care professionals.

Continuing Education Credit

In support of improving patient care, the University of Pittsburgh is jointly accredited by the Accreditation Council for Continuing Medical Education (ACCME), the Accreditation Council for Pharmacy Education (ACPE), and the American Nurses Credentialing Center (ANCC), to provide continuing education for the health care team.

Physician (CME)

The University of Pittsburgh designates this live activity for a maximum of **5.75 AMA PRA Category 1 Credits™**. Physicians should only claim credit commensurate with the extent of their participation in the activity.

Nursing (CNE)

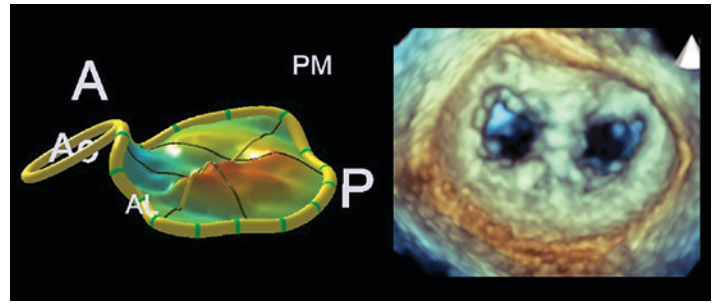
The maximum number of hours awarded for this Continuing Nursing Education activity is **5.75** contact hours.

Pharmacy (CPE)

This knowledge-based activity provides **5.75** contact hours of continuing pharmacy education credit.

Other Health Care Professionals

Other health care professionals will receive a certificate of attendance confirming the number of contact hours commensurate with the extent of participation in this activity.



Meeting Location

Herberman Conference Center, UPMC Shadyside

5230 Centre Ave.
Pittsburgh, PA 15232

Visit the UPMC Heart and Vascular Institute Website

The UPMC Heart and Vascular Institute invites you to visit our website at **UPMC.com/HVI**. Learn more about us and the conditions we treat, treatment options, specialty programs, services, research and education, our experts, patient stories, and locations.

For additional information contact:

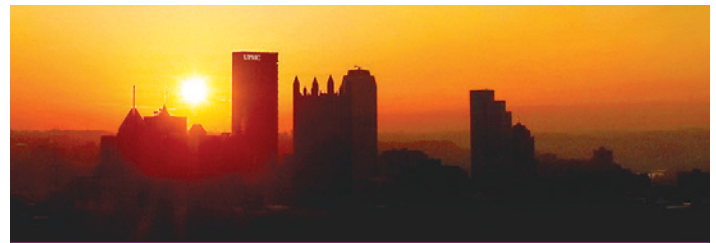
Courtney Sandrue

UPMC Heart and Vascular Institute
200 Lothrop St.
3rd Floor South Tower, WE354.1
Pittsburgh, PA 15213

Telephone: **412-647-5840**

Fax: **412-647-4227**

Email: **sandruec@upmc.edu**



Mark Your Calendar: March 21, 2020

**6TH ANNUAL
ADVANCED TRANSRADIAL
AND COMPLEX CARDIAC
INTERVENTIONS SYMPOSIUM**

UPMC Heart and Vascular Institute

UPMC CARDIO-ONCOLOGY AND CARDIAC IMAGING SYMPOSIUM

COURSE FACULTY

Robin Girdhar, MD

Clinical Assistant Professor of Medicine
University of Pittsburgh School of Medicine

Vikram Gorantla, MD

Hematologist Oncologist
UPMC Division of Hematology/Oncology

Matthew Harinstein, MD, FACC, FASE, FASNC

Assistant Professor of Medicine
University of Pittsburgh School of Medicine
Vice President, Medical Affairs, UPMC McKeesport
Chief, Cardiology, UPMC McKeesport
Co-Director, Noninvasive Imaging, UPMC Shadyside
UPMC Heart and Vascular Institute
Senior Vice President and Associate Chief Medical Officer
UPMC International

William Katz, MD, FACC, FASE

Associate Professor of Medicine
University of Pittsburgh School of Medicine
Director of Echocardiography, UPMC Presbyterian
UPMC Heart and Vascular Institute

Joshua Levenson, MD, FACC

Clinical Assistant Professor of Medicine
University of Pittsburgh School of Medicine
Associate Director, UPMC Cardiology Fellowship Program
UPMC Heart and Vascular Institute

Kirsten Rose-Felker, MD

Assistant Professor
University of Pittsburgh School of Medicine
UPMC Children's Hospital of Pittsburgh Pediatric Cardiology

Samir Saba, MD

Division Chief, Cardiology
University of Pittsburgh School of Medicine
Co-Director
UPMC Heart and Vascular Institute

Saul Silver, MD

Clinical Assistant Professor of Medicine
University of Pittsburgh School of Medicine
UPMC Heart and Vascular Institute

A.J. Conrad Smith, MD

Associate Professor of Medicine
University of Pittsburgh School of Medicine
Director, Cardiac Catheterization Lab
UPMC Heart and Vascular Institute

Prem Soman, MD, PhD, FRCP (UK), FACC

Associate Professor of Medicine (Cardiology), Clinical
and Translational Science
University of Pittsburgh
Director, Cardiac Amyloidosis Center
Director, Nuclear Cardiology
Director, Advanced Cardiac Imaging Fellowship
Director, Cardiac Amyloidosis Fellowship
UPMC Heart and Vascular Institute

Roby A. Thomas, MD

Hematologist Oncologist
UPMC Division of Hematology/Oncology
eRecord Medical Director of Oncology
UPMC Hillman Cancer Center

Kenneth Vesio, MD

Clinical Assistant Professor of Medicine
University of Pittsburgh School of Medicine
UPMC Heart and Vascular Institute

Flordeliza Villanueva, MD, FACC, FAHA

Professor of Medicine
Vice Chair for Pre-Clinical Research,
Department of Medicine
Director, Center for Molecular Imaging &
Image-Guided Therapeutics
University of Pittsburgh School of Medicine
Director, Non-Invasive Cardiovascular Imaging
UPMC Heart and Vascular Institute

Timothy C. Wong, MD, MS

Assistant Professor of Medicine
University of Pittsburgh School of Medicine
Director, UPMC Hypertrophic Cardiomyopathy Center
Associate Director, UPMC Cardiovascular Magnetic
Resonance Center
UPMC Heart and Vascular Institute

INVITED FACULTY —

Keynote Speaker

Jean-Bernard Durand, MD, FACP, FCCP, FACC, FHSA

Medical Director, Cardiomyopathy Services
Director, Cardiovascular Genetics Research
Director, Cardiology Fellowship Program
MD Anderson Cancer Center
Associate Professor of Medicine
The University of Texas MD Anderson Cancer Center

Dr. Jean-Bernard Durand is medical director of Cardiomyopathy Services and director of Cardiovascular Genetics Research at MD Anderson Cancer Center. He is the founder of the world's first heart failure program dedicated to cardiotoxicity and cancer. Dr. Durand's research focuses on understanding the molecular genetics of cardiomyopathies, primarily the identification of genes responsible for cardiomyopathy of all etiologies, as well as defining the molecular mechanisms involved in chemotherapy-induced cardiomyopathy. Through his work, Dr. Durand has established the world's largest database of DNA from patients with heart failure secondary to chemotherapy and developed a tissue bank for further expression studies to identify critical pathways which are common to cancer biology and cardiovascular biology.

FACULTY DISCLOSURE

All individuals in a position to control the content of this educational activity including members of the planning committee, speakers, presenters, authors, and/or content reviewers have disclosed all relevant financial relationships with any proprietary entity producing, marketing, re-selling, or distributing health care goods or services, used on, or consumed by, patients.

The following relevant financial relationships were disclosed:

Vikram Gorantla, MD, is a consultant for Mylan and Integra.

Samir Saba, MD, receives grant/research support and is on the advisory board for Boston Scientific.

Prem Soman, MD, receives grant/research support from Astellas, Pfizer, Alnylam, and Ionis.

Timothy Wong, MD, receives grant/research support for clinical trials of mavacamten, Site PI EXPLORER-HCM, MAVERICK-HCM, and MAVA-LTE.

No other planners, members of the planning committee, speakers, presenters, authors, content reviewers, and/or anyone else in a position to control the content of this educational activity have relevant financial relationships to disclose.

AGENDA — Saturday, January 11, 2020

7:00 a.m.	Registration and Breakfast	11:25 a.m.	Interesting Cardio-Oncology Case Presentations with Panel Discussion Jean-Bernard Durand, MD; Vikram Gorantla, MD; Saul Silver, MD; Roby Thomas, MD; Kenneth Vesio, MD
7:50 a.m.	Welcome and Introduction Matthew Harinstein, MD; William Katz, MD; Flordeliza Villanueva, MD	12:05 p.m.	Lunch
8:10 a.m.	Keynote: “Developing and Growing Your Cardio-Oncology Practice: It Takes a Village” Jean-Bernard Durand, MD	12:50 p.m.	Update on the Management of Hypertrophic Cardiomyopathy Timothy Wong, MD
8:55 a.m.	Cardio-Oncology Guideline Document Overview Matthew Harinstein, MD	1:10 p.m.	Novel Use of Echo Contrast Flordeliza Villanueva, MD
9:15 a.m.	Use of Imaging in Cardio-Oncology Joshua Levenson, MD	1:30 p.m.	Left Atrial Appendage Occluder Device Applications for Atrial Fibrillation Samir Saba, MD
9:35 a.m.	Cardiomyopathy Prevention Strategies Robin Girdhar, MD	1:50 p.m.	Mitral Valve Anatomy and Echo Evaluation of Mitral Regurgitation William Katz, MD
9:55 a.m.	Break	2:10 p.m.	Percutaneous Intervention for Mitral Regurgitation: Current and Future Options A.J. Conrad Smith, MD
10:15 a.m.	Cardio-Oncology Consults Beyond Cardiomyopathy Saul Silver, MD	2:30 p.m.	Concluding Remarks Matthew Harinstein, MD; William Katz, MD; Flordeliza Villanueva, MD
10:35 a.m.	Surveillance of Survivors of Childhood Cancer Kirsten Rose-Felker, MD	2:45 p.m.	Conference Adjournment
10:55 a.m.	Cardiac Amyloidosis: Novel Imaging Techniques and Overview Prem Soman, MD		

The information presented at this CME program represents the views and opinions of the individual presenters, and does not constitute the opinion or endorsement of or promotion by the UPMC Center for Continuing Education in the Health Sciences, UPMC/University of Pittsburgh Medical Center or Affiliates and the University of Pittsburgh School of Medicine. Reasonable efforts have been taken intending for educational subject matter to be presented in a balanced, unbiased fashion and in compliance with regulatory requirements. However, each program attendee must always use his/her own personal and professional judgment when considering further application of this information, particularly as it may relate to patient diagnostic or treatment decisions including, without limitation, FDA-approved uses and any off-label uses.

The University of Pittsburgh is an affirmative action, equal opportunity institution.