

DOMESTIC VIOLENCE SCREENING AND RESPONSE

The PEARR Screening Method

Take Care of Yourself



Let's Get Grounded



Objectives

Discuss the impact of IPV on birthing people.

Use the PEARR Tool to screen and respond to birthing people experiencing IPV.

Identify local resources and supports for birthing people who are IPV survivors.

Develop strategies to connect and collaborate with those local resources and supports.

Defining Domestic Violence

A **pattern of coercive behavior** used by one person to **gain and maintain power and control** over another in an intimate or familial relationship.

Domestic Violence Counts: A Snapshot of One Day in PA

On just ONE completely normal day in September 2021, the 60 local domestic violence programs in PA served:

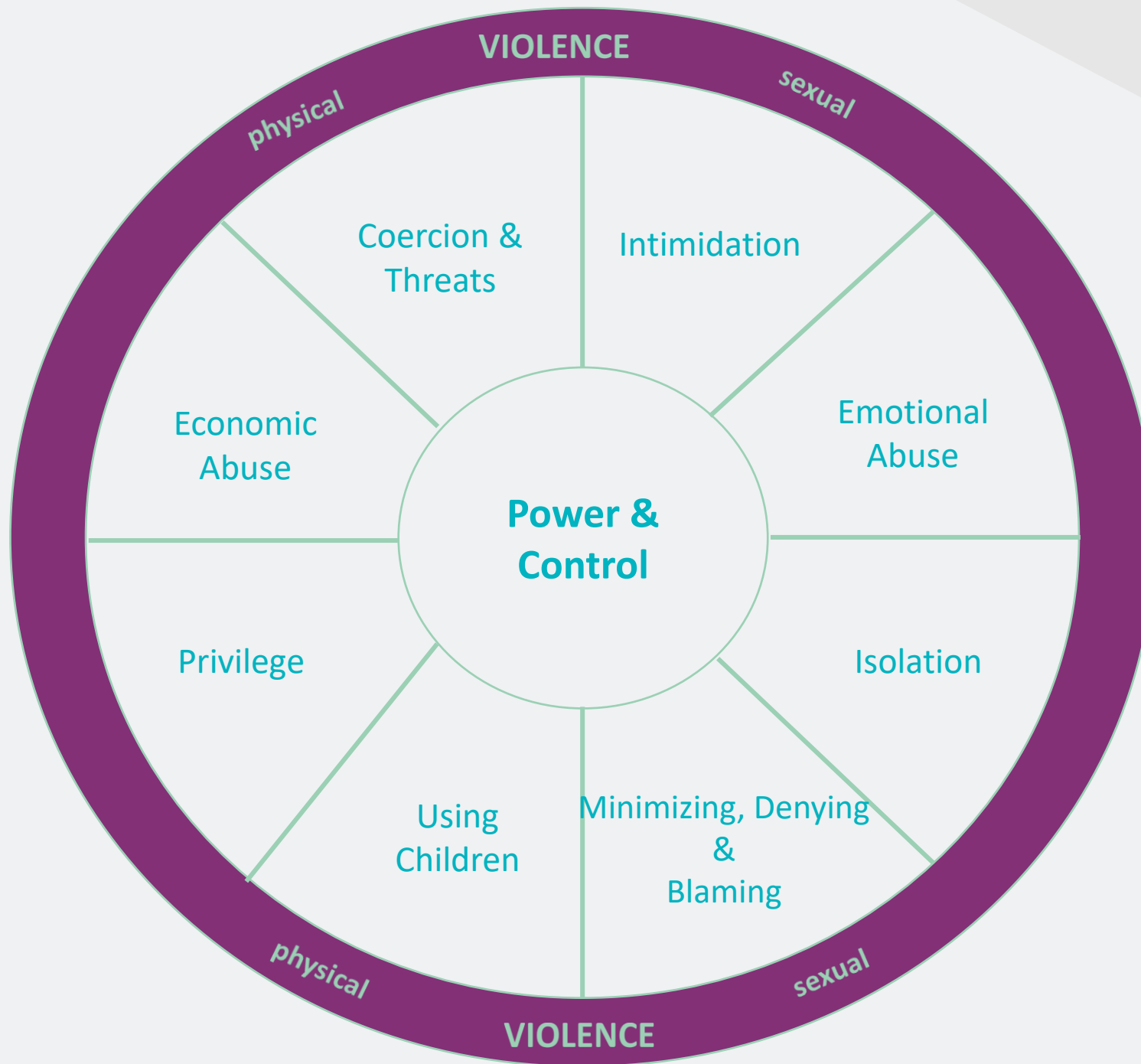
2,214 survivors:

1,286 adult and children survivors found refuge in emergency shelters, transitional housing, hotels, motels, or other housing

928 non-residential adult and child supportive services including counseling, legal advocacy, and support groups.

There were also 625 hotline contacts on that day.

Tactics of Abuse



Breakout Rooms!



What are some pregnancy-related tactics abusers may use?

PA Act 54

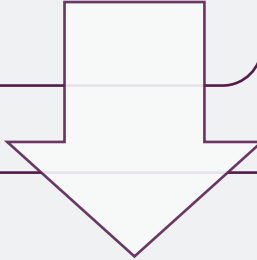


Requires notification to CYS when a child is born “affected by” substance use, exhibits withdrawal symptoms, or has fetal alcohol spectrum disorder.

How might this impact birthing people, especially those who may experience substance use coercion?

THE PEARR Tool

The PEARR Tool was developed by Dignity Health, in partnership with [HEAL Trafficking](#) and [Pacific Survivor Center](#), with support from Dignity Health Foundation.



Provides a guide for the stepping to talking to EVERY patient about domestic violence.

PEARR stands for:



Provide Privacy

Educate

Ask

Respond

Refer


Always ask in private!

PRIVATE

What are some strategies you use to get privacy with a patient?



Educate



Make clear, in many ways,
any of the limits to your
confidentiality.

Educate

“I talk to everyone about this.”

“So many people have or are experiencing violence.”

Asking about Domestic Violence

Normalize the conversation.

Reach out to your DV program to talk about how to ask.

Express concerns without judgment.

An aerial photograph of a long, multi-span concrete bridge crossing a wide river. The water is a vibrant turquoise color, and the surrounding landscape is lush with green trees. Two white cars are visible on the bridge, one in the middle and one further to the right. The bridge has a series of concrete piers supporting its structure.

More About
Asking

Survivors share
their story because
they TRUST you.

Survivor-centered responses are rooted in listening, not generating outcomes.



Some Helpful Questions

What do you need from me?

What do you need from [your organization]?

What are you most concerned about?

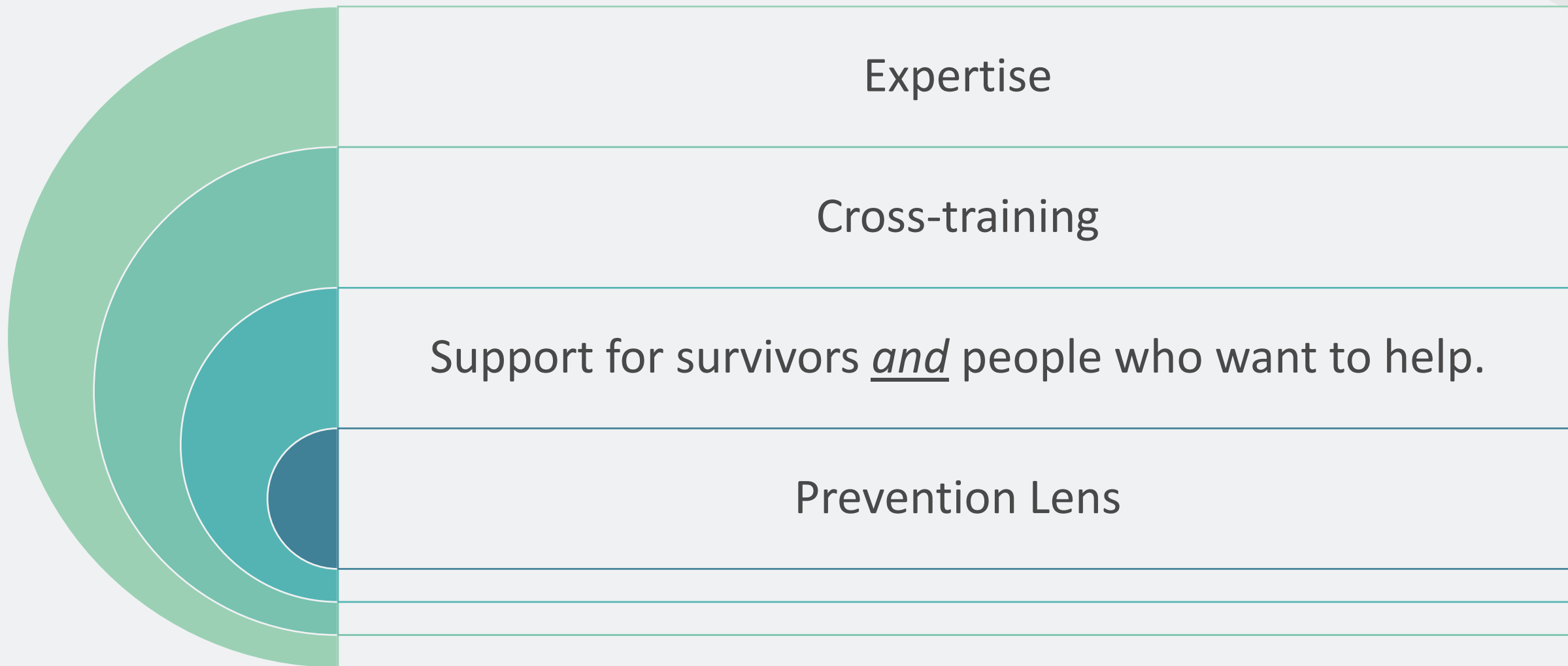
What do you need today?



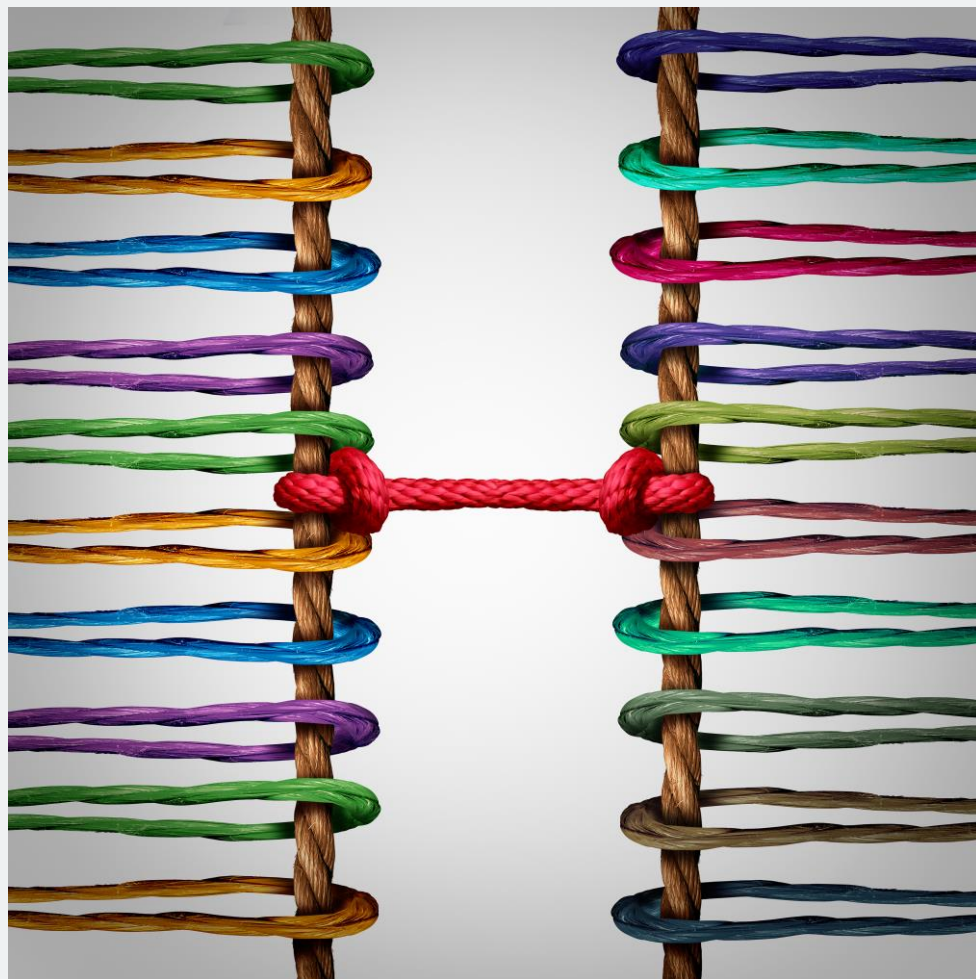
Help survivors grow a
circle of support.

Connection to a
domestic
violence
program

Partnerships with DV Programs



Suggestions for Collaborating with DV Programs



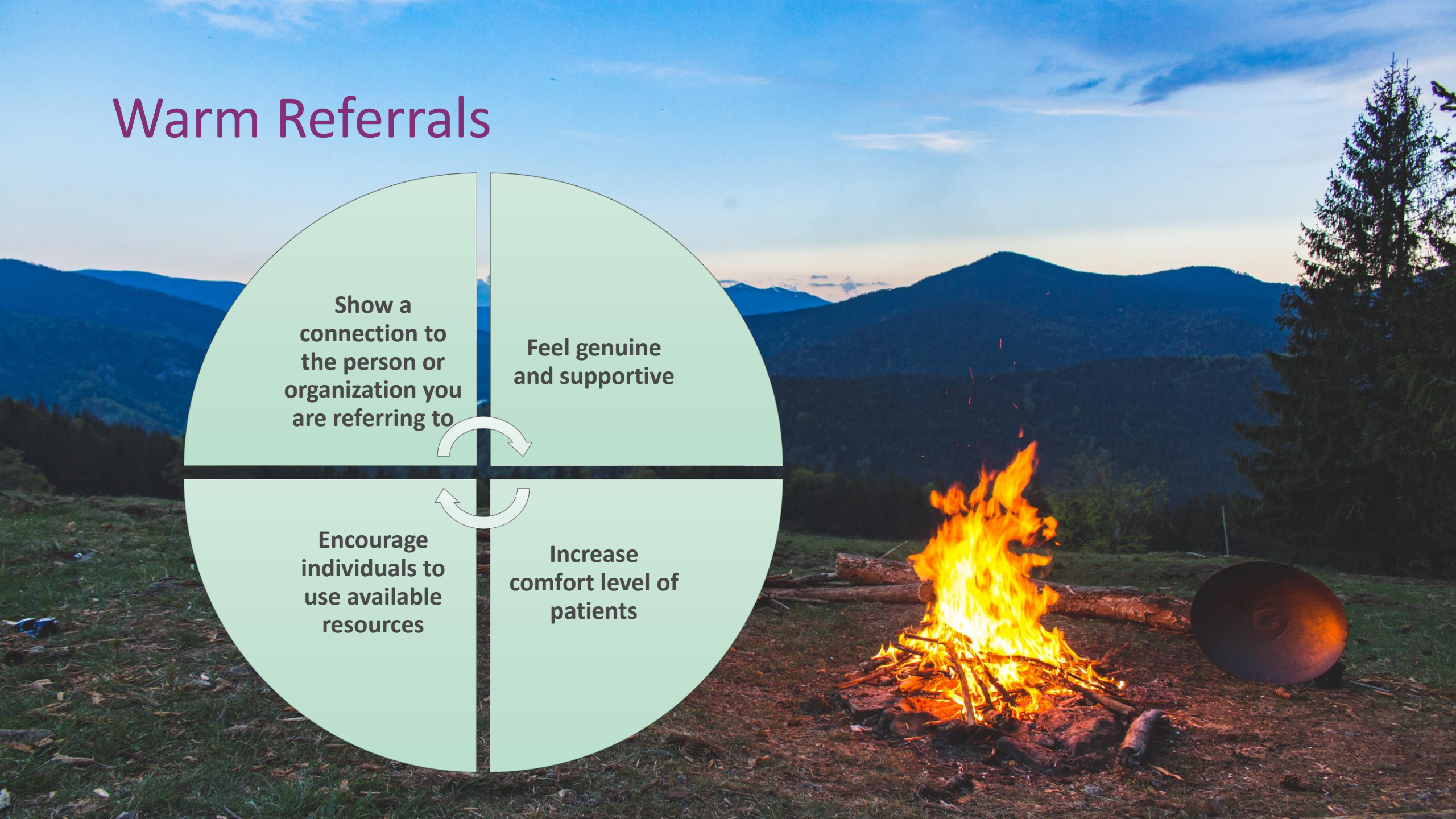
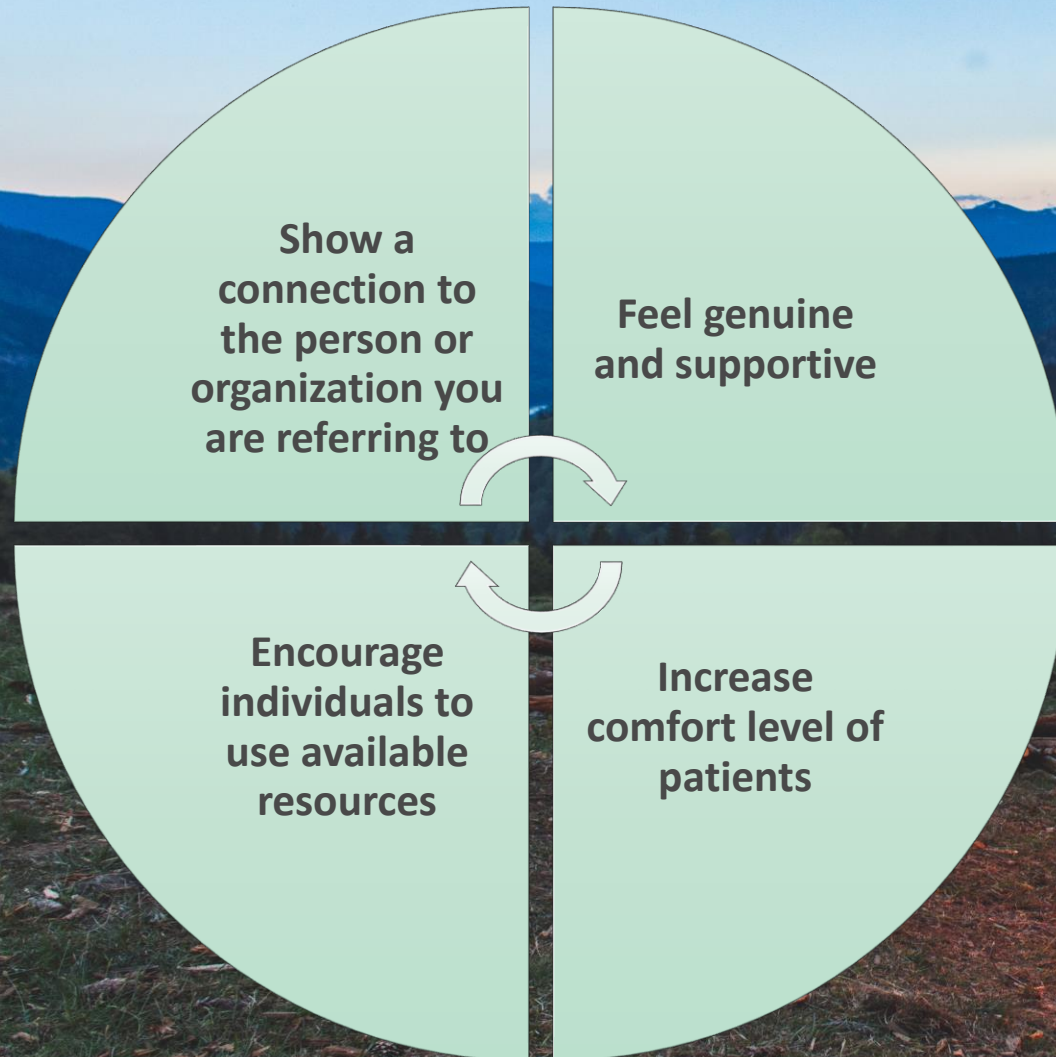
Cross-training about your roles and work

Schedule regular, ongoing meetings

Celebrate the successes of collaboration

Warm Referrals

Warm Referrals



Need help connecting with your local program?

We can help!





Ideas?

Questions?

Concerns?

Contact Information

Mae Reale, MA
Health Education Specialist
PCADV

mreale@pcadv.org

Phone: (717)-545-6400 ext. 118