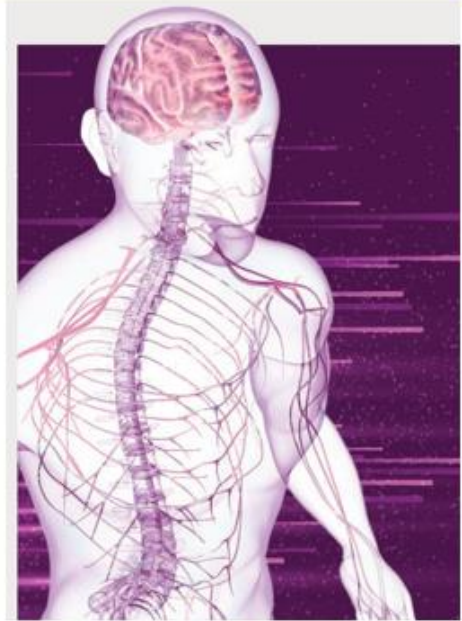


EEG AND EPILEPSY IN CLINICAL PRACTICE

July 8 - 10, 2022



UPMC Presbyterian BST S120 and hosted online via Zoom

200 Lothrop St. Pittsburgh, PA 15213

EVENT: 2022 EEG and Epilepsy in Clinical Practice

Overview and Learning Objectives:

This First Annual EEG and Epilepsy in Clinical Practice (2022) course is designed to be a comprehensive, instructional program that is geared towards professionals in the field of Neurology, Neurosurgery, Neurodiagnostics, Critical Care, Family Medicine, Pediatrics, Psychiatry, and Internal Medicine. This course will cover a wide range of topics including fundamentals of Electroencephalography data collection and analysis, ACNS standards, and more advanced concepts related to recent technological developments in the field and modern treatment methods of epilepsy and related neurological conditions. This course is designed to focus on the importance of multidisciplinary teamwork in the management of patients who require treatment by professionals in the aforementioned disciplines.

Who Should Attend:

This course is designed primarily for Neurologists, neurocritical care specialists, psychiatrists, neurosurgeons, internal medicine and family practice physicians, advance practice providers, technologists, and trainees in these disciplines.

Course Directors:



**Alexandra Urban, MD, FAAN,
FAES**

Course Co-Director

*Vice Chair for Clinical Affairs & Associate
Professor, Department of Neurology*

*Director, Epilepsy and Clinical
Neurophysiology Fellowships*



**Anto Bagic, MD, PhD, FAES,
FACNS**

Course Co-Director

*Professor of Neurology and Chief of
Epilepsy Division*

*Director, UPMC Epilepsy Monitoring Unit
(EMU)*

*Director, University of Pittsburgh
Comprehensive Epilepsy Center (UPCEC)*

Director, UPMC MEG Epilepsy Program

Chief Scientific Advisor, MEG Research

*Past President, American Clinical MEG
Society (ACMEGS)*

*Adjunct Professor, Department of
Biomedical Engineering, Carnegie Mellon
University (CMU)*

Course Faculty:

Thandar Aung, MD – University of Pittsburgh Department of Neurology

Anto Bagic, MD, PhD - University of Pittsburgh Department of Neurology

Maria Baldwin, MD - University of Pittsburgh Department of Neurology

Niravkumar Barot, MD, MPH - University of Pittsburgh Department of Neurology

James Castellano, MD, PhD - University of Pittsburgh Department of Neurology/Neurosurgery

Jonathan Elmer, MD, MS - University of Pittsburgh Department of Emergency Medicine

Luis Fernandez – UPMC Children's Hospital Department of Pediatric Neurology

Joanna Fong-Isariyawongse, MD - University of Pittsburgh Department of Neurology

Page Pennell, MD - University of Pittsburgh Department of Neurology

Cheryl Plummer, BS, R EEG T., NA-CLTM – UPMC Presbyterian Epilepsy Monitoring Unit

Mark Scheuer, MD – Chief Medical Officer for Persyst Inc.

Lori Shutter, MD - University of Pittsburgh Department of Neurology/Critical Care Medicine

Alexandra Urban, MD - University of Pittsburgh Department of Neurology

Anne Van Cott, MD - University of Pittsburgh Department of Neurology

Course Schedule:

FRIDAY, JULY 8th, 2022

7:00—7:50am:	Breakfast
7:50—8:00am:	Introduction to EEG and Epilepsy Course / Morning Announcements Alexandra Urban, MD
8:00—8:45am:	Neurophysiology and Basis of EEG Niravkumar Barot, MD, MPH
8:45—9:15am:	Review of International 10-20 System of Electrode Placement Cheryl Plummer, BS, R EEGT T., NA-CLTM
9:15—10:00am:	Normal EEG Anne Van Cott, MD
10:00—10:15am:	Break
10:15—11:15am:	Benign EEG Variants VS. Interictal Epileptiform Patterns Maria Baldwin, MD
11:15—12:00pm:	Common Ictal Pattern Niravkumar Barot, MD, MPH
12:00—1:00pm:	Lunch
1:00—1:45pm:	Quantitative EEG Analysis Mark Scheuer, MD
1:45—2:45pm:	EEG Findings in Pediatric Epilepsy Luis Fernandez, MD
2:45—3:00pm:	Break
3:00—3:30pm:	Brain Death, Post-anoxic EEG and Prognostication Jonathan Elmer, MD, MS
3:30—4:00pm:	ACNS Standardized ICU EEG Nomenclatures Joanna Fong-Isariyawongse, MD
4:00—5:00pm:	WORKSHOP: Interictal-ictal continuum / seizures / status epilepticus MODERATORS: Joanna Fong-Isariyawongse, MD / Alexandra Urban, MD
5:00pm:	ADJOURNMENT DAY 1
5:00—7:00pm	MEET AND GREET – HILTON GARDEN INN

SATURDAY, JULY 9th, 2022

7:00—7:50am:	Breakfast
7:50—8:00am:	Introduction to EEG and Epilepsy Course / Morning Announcements Anto Bagic, MD, PhD
8:00—8:45am:	Introduction to Epilepsy, Classification of Seizures and Epilepsies Anto Bagic, MD, PhD
8:45—9:45am:	Semiology, Lateralizing and Localizing Signs of Seizures Alexandra Urban, MD
9:45—10:15am:	Break
10:15—11:00am:	Introduction to Management of Epilepsy and ASM Updates James Castellano, MD, PhD
11:00—12:00pm:	Pregnancy Considerations on WWE Page Pennell, MD
12:00—1:00pm:	Lunch
1:00—2:00pm:	Treatment of Status Epilepticus Lori Shutter, MD
2:00—2:45pm:	Pediatric Syndromes Luis Fernandez, MD
2:45—3:00pm:	Break
3:00—4:00pm:	Mimickers of Epilepsy and Functional Neurological Disorder Anto Bagic, MD, PhD
4:00—5:00pm:	WORKSHOP: Epilepsy Treatment in Diverse Populations MODERATORS: Anto Bagic, MD, PhD / Alexandra Urban, MD
5:00pm:	ADJOURNMENT DAY 2

SUNDAY, JULY 10th, 2022

7:00—7:50am:	Breakfast
7:50—8:00am:	Introduction to EEG and Epilepsy Course / Morning Announcements Alexandra Urban, MD
8:00—8:30am:	Introduction the Concept of Drug Resistant Epilepsy (DRE) Anto Bagic, MD, PhD
8:30—9:15am:	Pre-Surgical Evaluation, Defining Epileptogenic Zone Thandar Aung, MD
9:15—10:00am:	Neuroimaging in Epilepsy Surgical Evaluation James Castellano, MD, PhD
10:00—10:30am:	Break - Snacks
10:30—11:00am:	Neurostimulation Part 1: VNS Anto Bagic, MD, PhD
11:00—11:30am:	Neurostimulation Part 2: RNS and DBS Alexandra Urban, MD
11:30—12:00pm:	Longitudinal Epilepsy Surgical Outcomes Niravkumar Barot, MD. MPH
12:00—1:00pm:	WORKSHOP: Case Based Approach to DRE MODERATORS: Niravkumar Barot, MD, MPH / James Castellano, MD, PhD / Alexandra Urban, MD
1:00pm:	COURSE ADJOURNMENT

Faculty Disclosure

All individuals in a position to control the content of this education activity have disclosed all financial relationships with any companies whose primary business is producing, marketing, selling, re-selling, or distributing healthcare products used by or on patients. All of the relevant financial relationships for the individuals listed below have been mitigated.

The following relevant financial relationships were disclosed:

Page Pennell, MD: Royalties - UpToDate, Inc

Mark Scheuer, MD: Employee – Persyst, Inc

Alexandra Urban, MD: Consultant – NeuroPace, Inc

No other members of the planning committee, speakers, presenters, authors, content reviewers and/or anyone else in a position to control the content of this education activity have relevant financial relationships with any companies whose primary business is producing, marketing, selling, re-selling, or distributing healthcare products used by or on patients.

Accreditation and Designation

In support of improving patient care, the University of Pittsburgh is jointly accredited by the Accreditation Council for Continuing Medical Education (ACCME), the Accreditation Council for Pharmacy Education (ACPE), and the American Nurses Credentialing Center (ANCC), to provide continuing education for the healthcare team.

Physician (CME)

The University of Pittsburgh designates this live activity for a maximum of 19.75 *AMA PRA Category 1 Credits™*. Physicians should claim only the credit commensurate with the extent of their participation in the activity.

Nursing (CNE)

The maximum number of hours awarded for this Continuing Nursing Education activity is 19.75 contact hours.

Physician Assistant (AAPA)

The University of Pittsburgh has been authorized by the American Academy of PAs (AAPA) to award AAPA Category 1 CME credit for activities planned in accordance with AAPA CME Criteria. This activity is designated for 19.75 AAPA Category 1 CME credits. PAs should only claim credit commensurate with the extent of their participation.

Other Healthcare Professionals:

Other health care professionals will receive a certificate of attendance confirming the number of contact hours commensurate with the extent of participation in this activity.

ASET CEUs

ASET – The Neurodiagnostic Society has granted 19.5 Continuing Education Units [ASET-CEUs] for this program. Such crediting, however, should not be construed by program participants as an endorsement of any type of instruments or supplies mentioned or involved in these presentations.

We gratefully acknowledge support from the following for this activity:

Exhibitors:

Corticare
Natus
MVAP Medical Supplies
Micromed
NeuroPace, Inc.
Eisai Inc.
RhythmLink International, LLC
LivaNova

Educational Grants:

Eisai Inc.
Neurelis, Inc.
Zimmer, Inc., a Zimmer Biomet Company