

# Fall Program

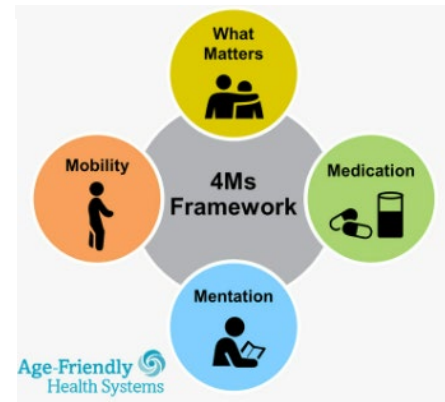
## The State of Age Friendly Health Systems in Pennsylvania

Featuring:

**Panelists across Pennsylvania that have obtained Age Friendly Health System recognition and/or certification**

Age-Friendly Care PA GWEP, Penn State Nese College of Nursing  
Allegheny Health Network  
UPMC Mercy  
UPMC St. Margaret's  
Veterans Affairs Pittsburgh Healthcare System  
The Willows, Presbyterian SeniorCare Network

*\*Panelists subject to change.*



This year's Fall Program is designed to educate attendees on Age Friendly Health Systems and the 4M's of geriatrics as well as give an opportunity to learn about multiple health systems across Pennsylvania and their experience in gaining Age Friendly Health System recognition and certification.

## Virtual Zoom Meeting

In Collaboration with the  
Jewish Healthcare Foundation

Complimentary Registration for Members  
(RSVP is required)

Guests are Welcome  
Guest fee (all healthcare professionals) - \$25

**Registration begins October 1<sup>st</sup>**  
**Visit [www.pagswd.org](http://www.pagswd.org)**

A confirmation will be sent to the email address you provide, upon successful registration.

This program is sponsored by  
The Pennsylvania Geriatrics Society – Western Division and  
University of Pittsburgh School of Medicine Center for Continuing  
Education in the Health Sciences

**Questions:** Contact Eileen Taylor at 412.321.5030 x105 or email to [etaylor@acms.org](mailto:etaylor@acms.org)

## AGENDA

- 6:00 pm Welcome – *Christine Herb, MD – President*
- 6:05 pm Fall Business Meeting – Pennsylvania Geriatrics Society – Western Division, *Christine Herb, MD, President*
- 6:20 pm Presentation on the 4Ms (What Matters, Medication, Mentation, Mobility) – *Lyn Weinberg, MD*
- 6:35 pm Panel Presentation
- 7:00 pm Panel Q&A
- 7:30 pm Conclusion

*\*Agenda subject to change*

# Pennsylvania Geriatrics Society – Western Division

## *The State of Age Friendly Health Systems in Pennsylvania*

**November 10, 2022**

### **Goals & Objectives**

---

**At the completion of this program, attendees will be able to:**

1. Describe the goals of an Age Friendly Health System
2. Recognize strategies to become recognized and certified as an Age Friendly Health System
3. Identify the current state of Age Friendly Health Systems in Pennsylvania

### **CONTINUING EDUCATION INFORMATION**

#### **Accreditation Statement**

---

In support of improving patient care, this activity has been planned and implemented by the University of Pittsburgh and Pennsylvania Geriatrics Society Western Division. The University of Pittsburgh is jointly accredited by the Accreditation Council for Continuing Medical Education (ACCME), the Accreditation Council for Pharmacy Education (ACPE), and the American Nurses Credentialing Center (ANCC), to provide continuing education for the healthcare team.

##### **Physician (CME)**

The University of Pittsburgh designates this live activity for a maximum of 1.5 AMA PRA Category 1 Credits™. Physicians should claim only the credit commensurate with the extent of their participation in the activity.

##### **Nursing (CNE)**

The maximum number of hours awarded for this Continuing Nursing Education activity is 1.5 contact hours.

##### **Physician Assistant (AAPA)**

The University of Pittsburgh has been authorized by the American Academy of PAs (AAPA) to award AAPA Category 1 CME credit for activities planned in accordance with AAPA CME Criteria. This activity is designated for 1.5 AAPA Category 1 CME credits. PAs should only claim credit commensurate with the extent of their participation.

##### **Social Work**

As a Jointly Accredited Organization, University of Pittsburgh is approved to offer social work continuing education by the Association of Social Work Boards (ASWB) Approved Continuing Education (ACE) program. Organizations, not individual courses, are approved under this program. State and provincial regulatory boards have the final authority to determine whether an individual course may be accepted for continuing education credit. University of Pittsburgh maintains responsibility for this course. Social workers completing this course receive 1.5 continuing education credits.

Other health care professionals will receive a certificate of attendance confirming the number of contact hours commensurate with the extent of participation in this activity.

## To Access Evaluation and Obtain Credit

---

To receive credit, you will be required to access your account at <http://cce.upmc.com> and complete the course evaluation and/or claim credit. Evaluations and credit are ONLY AVAILABLE through the <https://cce.upmc.com/> site.

If you are a new user, click Register to create a new account. The activity has been added to your Pending Activities and accessible immediately following the activity.

Certificates will be available to download and stored for future reference in your Completed Activities.

## FACULTY DISCLOSURE

No members of the planning committee, speakers, presenters, authors, content reviewers and/or anyone else in a position to control the content of this education activity have relevant financial relationships with any companies whose primary business is producing, marketing, selling, re-selling, or distributing healthcare products used by or on patients.

The information presented at this program represents the views and opinions of the individual presenters, and does not constitute the opinion or endorsement of, or promotion by, the UPMC Center for Continuing Education in the Health Sciences, UPMC / University of Pittsburgh Medical Center or Affiliates and University of Pittsburgh School of Medicine. Reasonable efforts have been taken intending for educational subject matter to be presented in a balanced, unbiased fashion and in compliance with regulatory requirements. However, each program attendee must always use his/her own personal and professional judgment when considering further application of this information, particularly as it may relate to patient diagnostic or treatment decisions including, without limitation, FDA-approved uses and any off-label uses.