

# 2022 Annual Update in Medical Hepatology



A CME event presented by the  
UPMC Center for Liver Diseases

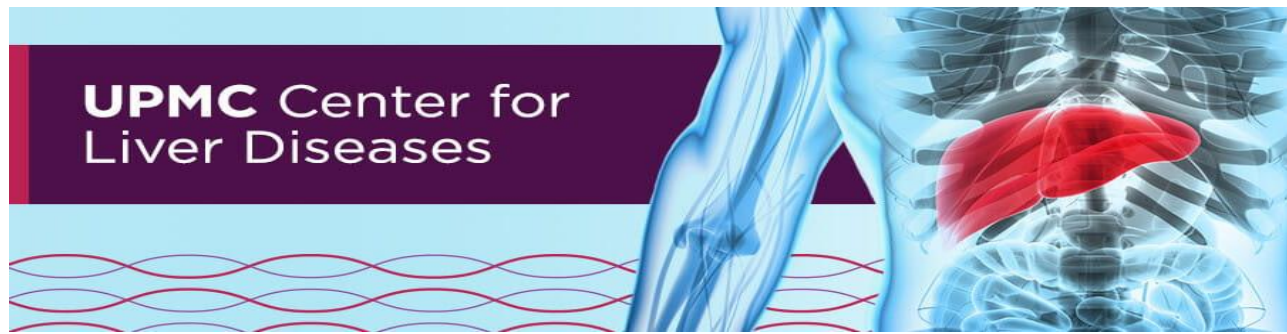
Saturday, Dec. 3  
7 a.m. to 2:30 p.m.

University Club | Pittsburgh, Pa.

**UPMC**  
LIFE CHANGING MEDICINE

# COURSE HANDOUT

Page 2	<b>Introduction</b>
Page 3 & 4	<b>Schedule for the Day</b>
Page 5	<b>Course Director and Course Faculty</b>
Page 7	<b>Course Faculty Disclosures</b>
Page 8	<b>Accreditation Information</b>
Page 9	<b>How to Obtain Credits</b>
Page 10	<b>Education Grant and Exhibitors</b>



## INTRODUCTION

The primary purpose of the **2022 UPMC Annual Update in Medical Hepatology** is to *bring physicians, researchers, and hepatology associates together to advance our understanding of the origin and progression of liver diseases and to provide optimal treatments to patients as soon as possible.* This meeting is led by academic physicians who are committed to broad collaboration to support patients who desperately need answers.

We are delighted to welcome **Binu John, MD** from the University of Miami and **Kymerly Watt, MD** from the Mayo Clinic in Rochester, MN as our 2022 guest speakers. We also look forward to lively debates and interactions from all course attendees throughout the day, particularly during the lunch breakout meetings and afternoon case discussions.

This 2022 UPMC Annual Update in Medical Hepatology conference is indebted to its industry partners. **Please Visit our Exhibitors** in the Gold Room (same floor as plenary sessions) throughout the conference.

Thank you for attending.

In good health,

**Jaideep Behari, MD, PhD**

Associate Professor of Medicine

Director, FLOW (Fatty Liver, Obesity & Wellness) Clinic

*Course Co-Director, 2022 UPMC Annual Update in Medical Hepatology*

**Shahid Malik, MD**

Clinical Associate Professor of Medicine

Program Director, Advanced Fellowship in Transplant Hepatology

*Course Co-Director, 2022 UPMC Annual Update in Medical Hepatology*

**Amy Roundtree Schmotzer, RN, BSN**

Lead Clinical Research Coordinator

*Course Planning Committee, 2022 UPMC Annual Update in Medical Hepatology*

**Division of Gastroenterology, Hepatology and Nutrition**

**UPMC Center for Liver Diseases**

**University of Pittsburgh | UPMC**



# SCHEDULE

- 7 - 7:50 a.m.: *Registration, Breakfast, and Visit Exhibitors*  
 Morning Conference Locations (all on 2<sup>nd</sup> Floor):
- Ballroom B – Plenary Sessions
  - Gold Room – Exhibits and Beverage Stations
  - 2<sup>nd</sup> Floor Hallway – Breakfast & Lunch Buffets
- 7:50 - 8 a.m.: **WELCOME AND OPENING REMARKS**  
*Jaideep Behari, MD, PhD, and Shahid Malik, MD (Course Directors)*
- 8 - 9:15 a.m.: **SESSION 1:** Moderator: *Kapil Chopra, MD*
- 8 a.m.: **Update on Portal Hypertension Management**  
*Shahid Malik, MD*
- 8:20 a.m.: **Update on Novel Therapies for HCC**  
*John Rhee, MD*
- 8:40 a.m.: **Update on Viral Hepatitis**  
*Alex Myint, MD*
- 9 a.m.: **Panel Q&A**
- 9:15 - 9:30 a.m.: *Break and Visit Exhibitors*
- 9:30 - 10:45 a.m.: **SESSION 2:** Moderator: *Obaid Shaikh, MD*
- 9:30 a.m.: **Improving Quality of Care for Cirrhosis Patients**  
*Shari Rogal, MD, MPH*
- 9:50 a.m.: **Barriers to LDLT and Wait List Engagement**  
*Swaytha Ganesh, MD*
- 10:10 a.m.: **Endoscopic Advances in Hepatology**  
*Harkirat Singh, MBBS*
- 10:30 a.m.: **Panel Q&A**
- 10:45 a.m.: **SESSION 3:** Moderators: *Jaideep Behari, MD, PhD, and Shahid Malik, MD*
- 10:45 a.m.: **COVID-19 and the Liver**  
*Binu John, MD*
- 11:15 a.m.: **NAFLD Before and After Liver Transplantation**  
*Kymerly D. Watt, MD*
- 11:45 a.m.: **Panel Q&A**
- 12 - 12:15 p.m.: *Lunch Pick-Up and Visit Exhibitors*



## SCHEDULE continued

12:15 - 1:05 p.m.:

**SESSION 4: LUNCH BREAKOUT SESSIONS**

**Hepatology Associate Forum: Lifestyle Counseling and Preventive Care in Hepatology**

Conference Room A – 3<sup>rd</sup> Floor

Moderators: *Kevin Abercrombie, CRNP*  
*Jennifer Kilpatrick, MSN, RN, CCTC*  
*Amy Roundtree Schmotzer, RN, BSN*

**Hepatology Clinician Forum: Incorporating Liver Elastography in Practice**

Ballroom B – 2<sup>nd</sup> Floor

Moderators: *Shahid Malik, MD*  
*Alex Myint, MD*

**Fellow/Young Investigator Career Forum with Guest Faculty:  
 Academic and Clinical Career Development Pathways in Hepatology**

Ballroom A – 1<sup>st</sup> Floor

Moderators: *Gavin Arteel, PhD*  
*Alan Noll, MD*  
*Shari S. Rogal, MD, MPH*  
 with Special Guests: *Binu John, MD, and Kimberly D. Watt, MD*

1:05 - 1:15 p.m.:

*Return to Plenary Session and Visit Exhibitors*

1:15 - 2:30 p.m.:

**SESSION 5: HOW I WOULD MANAGE THIS: CASE-BASED DISCUSSIONS**

Ballroom B – 2<sup>nd</sup> Floor

Moderators: *Fadi Francis, MD, and Jaideep Behari, MD, PhD*  
 Panel: *Drs. Kapil Chopra, Binu John, Shahid Malik, and Kimberly Watt*

1:15 p.m.:

**Chronic Liver Disease**  
 GI Fellow Presenter: *Stela Celaj, MD, PhD*

1:35 p.m.:

**Cirrhosis and Its Complications**  
 GI Fellow Presenter: *Adeyinka Adejumo, MD*

1:55 p.m.:

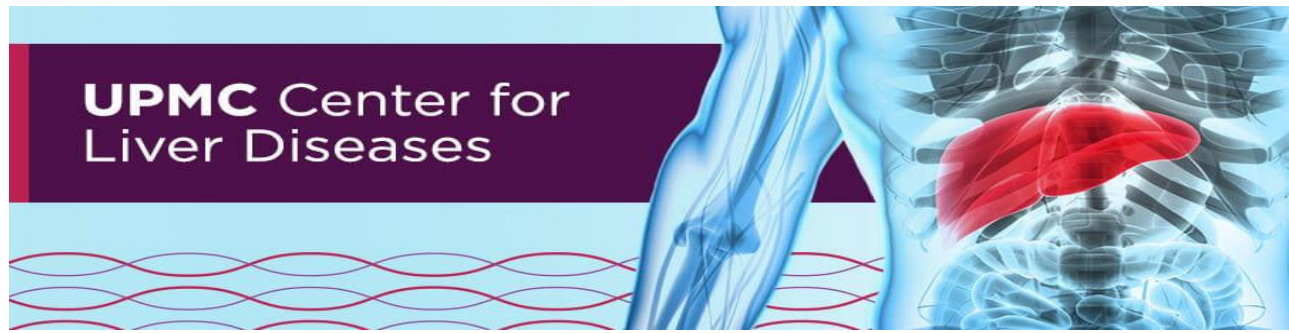
**Peri- and Post-liver Transplant Management**  
 Advanced Hepatology Fellow Presenter: *Nabeeha Mohy-ud-din, MD*

2:15 p.m.:

**Panel Q&A**

2:30 p.m.:

*Adjourn*



## COURSE FACULTY

*With the Division of Gastroenterology, Hepatology and Nutrition and the UPMC Center for Liver Diseases at the University of Pittsburgh / UPMC, unless noted otherwise.*

### **Course Planning Committee and Internal Course Faculty:**

**Jaideep Behari, MD, PhD**

Associate Professor of Medicine  
Director, FLOW (Fatty Liver, Obesity and Wellness) Clinic  
*Course Co-Director, 2022 UPMC Annual Update in Medical Hepatology*

**Shahid Malik, MD**

Clinical Associate Professor of Medicine  
Program Director, Advanced Fellowship in Transplant Hepatology  
*Course Co-Director, 2022 UPMC Annual Update in Medical Hepatology*

**Amy Roundtree Schmotzer, RN, BSN**

Lead Clinical Research Coordinator  
*Course Planning Committee, 2022 UPMC Annual Update in Medical Hepatology*

### **Guest Course Faculty:**

**Binu V. John, MD, MPH**

Associate Professor of Medicine  
University of Miami Miller School of Medicine  
Assistant Chief of Medicine, Chief of Hepatology, and Interim Chief of Hematology and Oncology  
Bruce W. Carter VA Medical Center  
Miami, FL

**Kymerly D. Watt, MD**

Professor of Medicine  
Medical Director, Living Donor Liver Transplantation  
Mayo Clinic  
Rochester, MN



## UPMC Center for Liver Diseases

# COURSE FACULTY

*With the Division of Gastroenterology, Hepatology and Nutrition and the UPMC Center for Liver Diseases at the University of Pittsburgh / UPMC, unless noted otherwise.*

### Internal Course Faculty:

**Kevin Abercrombie, CRNP**

Advanced Practice Provider

**Adeyinka Adejumo, MD**

Gastroenterology and Hepatology Fellow, Year III

**Gavin E. Arteel, PhD**

Professor of Medicine  
Associate Division Chief for Basic Science  
Pilot and Feasibility Core Director, Pittsburgh Liver  
Research Center

**Stela Celaj, MD, PhD**

Gastroenterology and Hepatology Fellow, Year II

**Kapil B. Chopra, MD**

Professor of Medicine  
Vice Chair of Medicine, UPMC Mercy

**Fadi F. Francis, MD**

Clinical Associate Professor of Medicine  
Medical Director, UPMC Center for Liver Diseases

**Swaytha Ganesh, MD**

Assistant Professor of Medicine  
Medical Director, Living Donor Liver Transplant  
(LDLT) Program

**Jennifer Kilpatrick, MSN, RN, CCTC**

Clinical Transplant Coordinator  
Thomas E. Starzl Transplantation Center

**Nabeeha Mohy-ud-din, MD**

Advanced Fellow in Transplant Hepatology

**Alex H. Myint, MD**

Assistant Professor of Medicine  
Hepatologist, VA Pittsburgh Healthcare System

**Alan G. Noll, MD**

Gastroenterology and Hepatology Fellow, Year II

**John Rhee, MD**

Assistant Professor of Medicine  
Division of Hematology/Oncology

**Shari S. Rogal, MD, MPH**

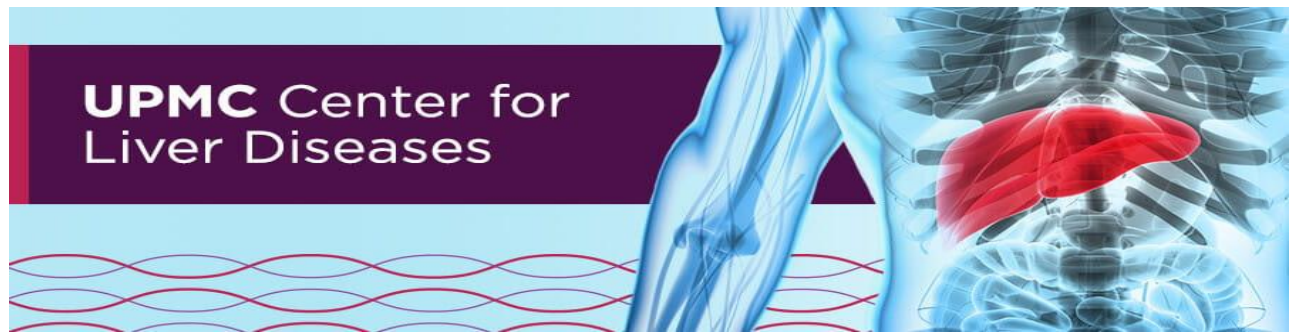
Associate Professor of Medicine and Surgery  
Co-director, CTSI IMPACT and Implementation Lab Cores  
Core Investigator, Center for Health Equity Research and  
Promotion, VA Pittsburgh Healthcare System

**Obaid S. Shaikh, MD**

Professor of Medicine  
Director, Transplantation Medicine, VA Pittsburgh  
Healthcare System

**Harkirat Singh, MBBS**

Clinical Assistant Professor of Medicine, Pharmacology  
and Biology



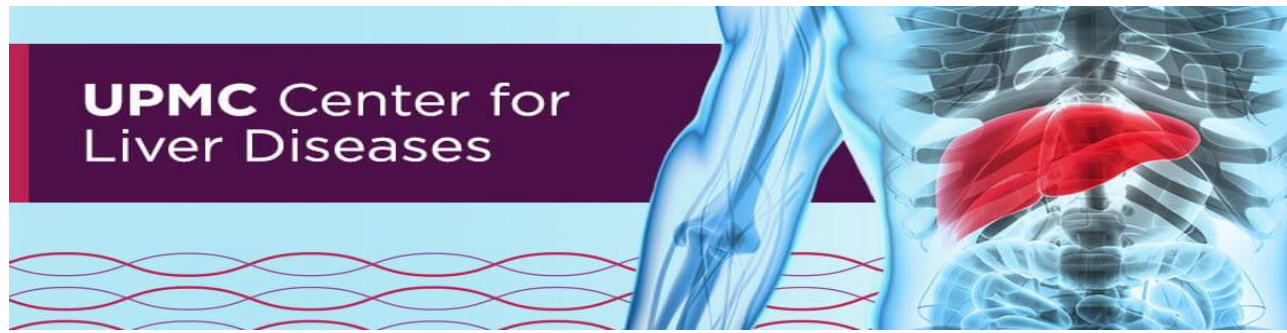
## COURSE FACULTY DISCLOSURES

All individuals in a position to control the content of this education activity have disclosed all financial relationships with any companies whose primary business is producing, marketing, selling, re-selling, or distributing healthcare products used by or on patients.

All of the relevant financial relationships for the individuals listed below have been mitigated:

- **Jaideep Behari, MD, PhD** receives grant/research support from Pfizer, Gilead, Endra, and AstraZeneca. He also receives other institutional research contracts from Pfizer, Intercept, Galectin, Exact Sciences, Genentech, Inventiva, Enanta, Galmed, and Celgene.
- **Binu V. John, MD, MPH** receives grant/research support from Exact Sciences, Gilead, GSK, Glycotest Inc., Exelixis, BMS, Eisai, and Viking Therapeutics. He is a consultant for GSK and Dova, and he is also on the speakers' bureau for GSK.
- **Obaid S. Shaikh, MD** is a consultant with Gilead Sciences and Mallinckrodt Pharmaceuticals. He is also a stockholder with Mallinckrodt Pharmaceuticals.
- **Kymberly D. Watt, MD** receives grant/research support from Intercept and is the PI for this study. She is also a stockholder with Viking and Madrigal.

No other members of the planning committee, speakers, presenters, authors, content reviewers and/or anyone else in a position to control the content of this education activity have relevant financial relationships with any companies whose primary business is producing, marketing, selling, re-selling, or distributing healthcare products used by or on patients.



## ACCREDITATION INFORMATION

In support of improving patient care, the University of Pittsburgh is jointly accredited by the Accreditation Council for Continuing Medical Education (ACCME), the Accreditation Council for Pharmacy Education (ACPE), and the American Nurses Credentialing Center (ANCC), to provide continuing education for the healthcare team.

### Physician (CME)

The University of Pittsburgh designates this live activity for a maximum of 6.0 *AMA PRA Category 1 Credits™*. Physicians should claim only the credit commensurate with the extent of their participation in the activity.

### Nursing (CNE)

The maximum number of hours awarded for this Continuing Nursing Education activity is 6.0 contact hours.

Other health care professionals will receive a certificate of attendance confirming the number of contact hours commensurate with the extent of participation in this activity.

### Course Objectives

- Partner with other regional academic liver practitioners to educate the regional and national medical communities about liver disease advancements.
- Identify advancements in non-alcoholic and alcoholic liver disease treatments, with attention to liver diseases such as NAFLD, cholestatic diseases, hepatocellular carcinoma, and viral hepatitis.
- Examine novel management strategies for post-COVID hepatology treatments.
- Address barriers to liver transplantation and living donor liver transplantation, leading to enhanced patient care.
- Foster the development of multidisciplinary, fluid and interactive models to treat liver diseases.

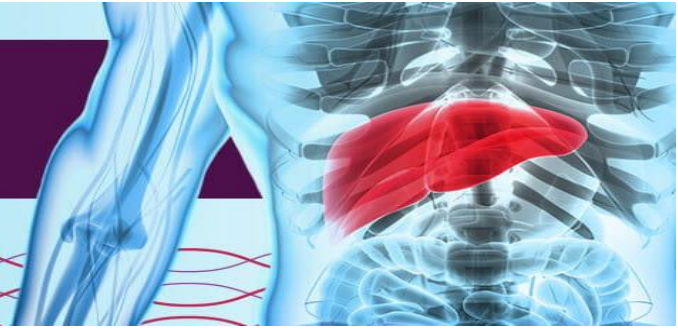
### Target Audience

This course is designed for hepatologists, gastroenterologists, surgeons, oncologists, radiologists, basic and clinical researchers, and general physicians. Physicians and scientists interested in hepatology clinical service, clinical research, and career development are encouraged to attend. Advanced practice providers, clinical and research nurses, and related health care professionals interested in hepatology medicine are also invited to attend.

### Disclaimer Statement

The information presented at this CME program represents the views and opinions of the individual presenters and does not constitute the opinion of endorsement of, or promotion by, the UPMC Center for Continuing Education in the Health Sciences, UPMC / University of Pittsburgh Medical Center Affiliates and University of Pittsburgh School of Medicine. Reasonable efforts have been taken intending for educational subject matter to be presented in a balanced, unbiased fashion and in compliance with regulatory requirements. However, each program attendee must always use his/her own personal and professional judgment when considering further application of this information, particularly as it may relate to patient diagnostic or treatment decisions including, without limitation, FDA-approved uses and any off-label uses.





## How to Receive Continuing Education Credit

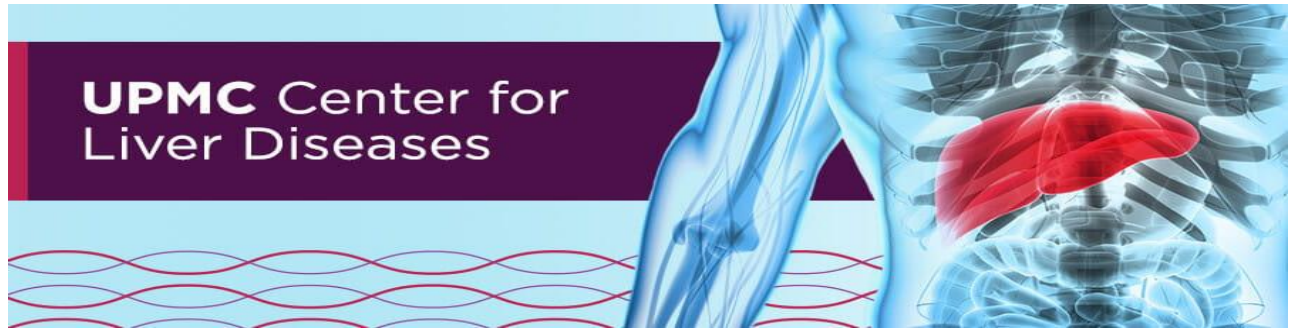
The UPMC Center for Continuing Education in the Health Sciences (CCEHS) has implemented a new continuing education management system > <http://cce.upmc.com>.

**To receive credit, you will be required to log in,  
complete the course evaluation,  
and claim credit between 12/3/22 and 1/9/23.**

- If you are a **new user** to this UPMC site, click “Register” to create a new account. You must use the same email address that you used to register for this activity. **If you have an account already**, please log in and proceed to the next step.
- **If you preregistered before 11/30/22, you will find this course in your “Pending Activities” as of December 3, 2022**, when you may complete the course evaluation and claim credit. If you registered after 11/30/22, please wait until 12/7/22 to access your credit transcript.
- Certificates will be available for download and will be stored for future reference in your “Completed Activities” bin.

To answer common questions or for step-by-step instructions, please visit the FAQs available on the CCEHS Learning Portal > <https://cce.upmc.com/content/faq>.

**UPMC Center for  
Liver Diseases**



***We gratefully acknowledge conference support from the following industry partners:***

**EDUCATIONAL GRANTS**

***AstraZeneca  
Gilead Sciences  
Salix Pharmaceuticals***

**PREMIER EXHIBIT SPONSORSHIPS**

***AbbVie  
Echosens***

**EXHIBIT SPONSORSHIPS**

***Eisai  
Gilead Sciences (1)  
Gilead Sciences (2)  
Mallinckrodt Pharmaceuticals  
Salix Pharmaceuticals  
Takeda Pharmaceuticals, U.S.A., Inc.  
US Digestive Health***