



**PA NAVIGATE**  
linking patients to community resources

# PCMH Western PA Session

February 6, 2024



# Agenda

- What is PA Navigate?
- PA Navigate participants (providers, payers, CBOs, citizens, HIOs, etc.)
- PA Navigate milestones/timeline
- PA Navigate scenario for PCMH Providers (e.g., a PCMH provider identifies an SDOH need based on their existing SDOH screening process and tools and then needs to make a referral...)
- Pa Navigate demo (how to make that referral via PA Navigate)
- Implementation next steps for PCMH providers re: the Rollout of PA Navigate and any related grant opportunities for PCMHs to assist with onboarding



# What was the RISE PA Initiative?

PA DHS set the foundation for the Resources Information and Services Enterprise (RISE PA) to address citizens' health-related social needs (HRSNs)

Screen clients for health-related social needs

Identify resources and organizations to meet clients' needs

Make and track referrals  
coordinate care with other CBOs, state agencies and healthcare organizations



# How would RISE PA assist Pennsylvanians?



## Additional Goals:

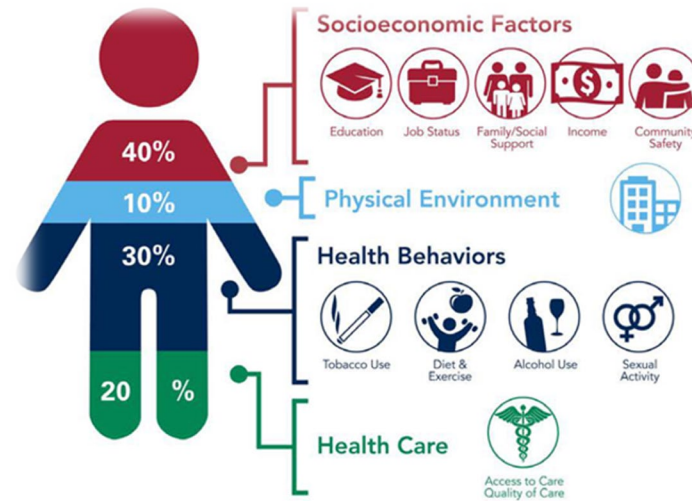
Help people achieve better long-term health outcomes

Maximize the impact of healthcare dollars



# What is PA Navigate?

A statewide community information network designed to address health and social care needs for Pennsylvanians by connecting them to community services.



Source: Institute for Clinical Systems Improvement; Going Beyond Clinical Walls: Solving Complex Problems, 2014. Graphic designed by

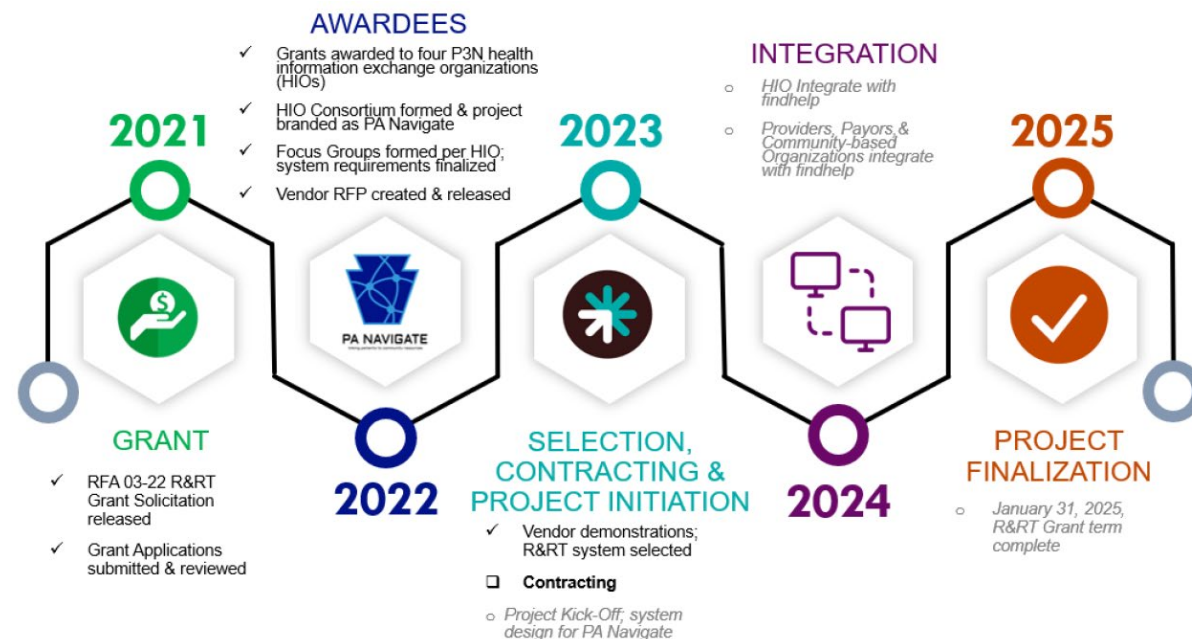
## Goals

- ▶ Build a statewide platform connecting patients to social services
- ▶ Making SDOH/HRSN data as shareable as clinical data
- ▶ Understanding citizens' needs and capacity to meet them
- ▶ Help make Social Care sustainable



# Current Status

- ▶ DHS grant to HIEs through January 2025
- ▶ HIEs ran procurement for Resource & Referral Platform
- ▶ Selected **findhelp** as statewide vendor
- ▶ Initial priorities:
  - Setup & implementation
  - Integration with HIE systems
  - Contracting & integration discovery calls with Member Orgs/CBOs



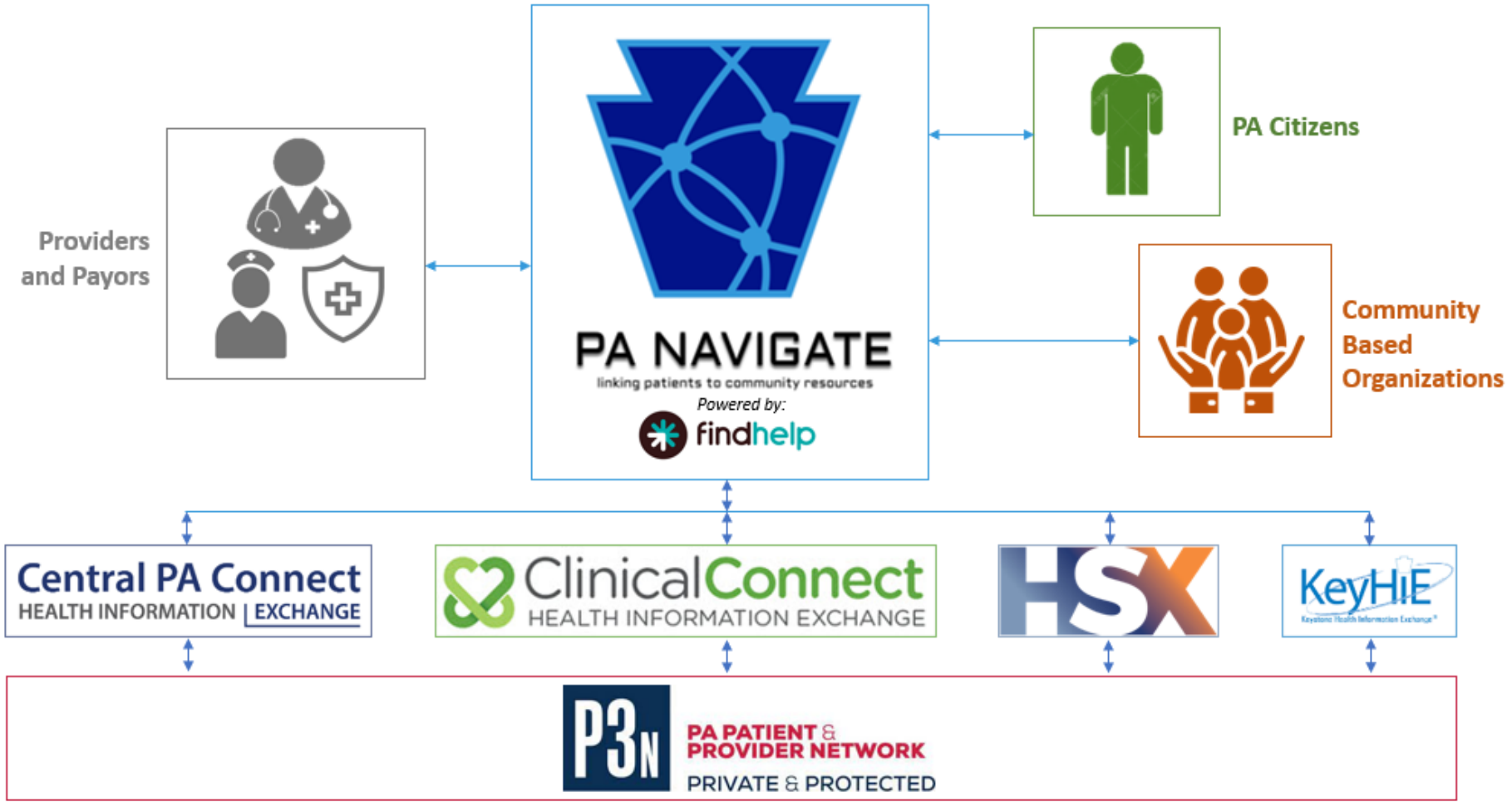
**Public launch: January 23, 2024, at Community Action Partnership of Lancaster**

**URL: [www.pa-navigate.org](http://www.pa-navigate.org)**


**Email: [info@pa-navigate.org](mailto:info@pa-navigate.org)**




# PA Navigate Participants




# Why Participate?




Update service offerings, and update service capacity.




Process inbound referrals and applications for services.



Publish available appointment slots for intake purposes with clients.



Suite of reporting tools to measure inbound activities.



Update referral status by email.

- ▶ Improved Communication and Reduced Care Silos
- ▶ Increased Awareness of Available Services
- ▶ Suite of No-Cost Online Referral Tools
- ▶ Technology & Infrastructure Support
- ▶ Robust Impact and Program Efficacy Reporting
- ▶ Available Capacity Building Incentives





# PA Navigate Benefits

## CBO's

- ▶ Demonstrate your impact to partners & current/potential funders
- ▶ More impact/funding → more people you can assist
- ▶ Financial incentives for closing the loop being developed
- ▶ Analytics to better understand your operations
- ▶ Consolidate referral sources on a common platform
- ▶ Integrate with your existing system to streamline workflow

## Community

- ▶ Public-facing self-serve option for citizens
- ▶ Better coverage of SDOH needs = better outcomes
- ▶ Population health monitoring for social needs
- ▶ Uncovering areas of unmet need/capacity
- ▶ Demonstrating the value of addressing social needs in terms of improved health outcomes
- ▶ Attracting more Medicaid funds



# PA Navigate PCMH Scenario (Current Scope)



- ▶ Emily is referred by her MCO to a local food pantry for short-term food support
- ▶ Food pantry volunteer enrolls her in services, updates status in PA Navigate
- ▶ PA Navigate shares Emily's need and service status with referring MCO and Emily's healthcare team
- ▶ Food pantry uses data from PA Navigate to develop sustained funding/contracts with top referring organizations



## Long-Term Vision

- ▶ Proactive identification of potentially eligible individuals & families
- ▶ Automate outreach, screening, enrollment
- ▶ Enable reimbursement for health-related social need services
- ▶ Demonstrate impact on health outcomes



# Future State PCMH Scenario



- ▶ Emily approaches a local food pantry for short-term support
- ▶ Food pantry volunteer searching PA Navigate learns Emily is eligible for paid food support through her MCO
- ▶ Emily is enrolled in services, status updated in PA Navigate
- ▶ PA Navigate formats electronic claim and facilitates payment to food pantry
- ▶ Food pantry refers Emily to local community action agency for additional screening



# Options for Using PA Navigate

## Community Based Organizations

### No system today

- Use PA Navigate natively
- Claim your listing
- Basic internet connection required

### Using findhelp already

- Claim your listing
- Enable workflow/custom screener
- Consider integration

### Using another system

- Integrate with PA Navigate
- Share referrals, status, goals





ZIP or keyword or program name

Search and connect to support. Financial assistance, food pantries, medical care, and other free or reduced-cost help starts here.

Select Language English



FOOD



HOUSING



GOODS



TRANSIT



HEALTH



MONEY



CARE



EDUCATION



WORK



LEGAL



2,523 programs

in the west chester, pa 19380 area

Choose from the categories above and browse local programs



PA NAVIGATE linking patients to community resources

# System Demonstration





Discussion/Questions?



# Next Steps

1. Review your listing at [www.pa-navigate.org](http://www.pa-navigate.org) or "Suggest a Program"
2. Claim/update your listing
3. Select referral workflow option
4. [If applicable] contact us to explore integration
5. Join mailing list → <http://eepurl.com/iHtVPo>





# Who Can I Contact?



Jennifer Natale, Advisor, Special Projects  
[jennifer.natale@healthshareexchange.org](mailto:jennifer.natale@healthshareexchange.org)  
570-441-4241

Bill Marella, VP Value Based Care &  
Analytics  
[Bill.marella@healthshareexchange.org](mailto:Bill.marella@healthshareexchange.org)  
610-745-7605



Phyllis Szymanski, President  
[szymanski@dclinicalconnecthie.com](mailto:szymanski@dclinicalconnecthie.com)  
412-628-0179

Laura Mosesso, Client Service Manager  
[Mosessol@dclinicalconnecthie.com](mailto:Mosessol@dclinicalconnecthie.com)  
412-855-0404



Keith Cromwell, Program Director  
[keith@centralpaconnect.org](mailto:keith@centralpaconnect.org)  
717-544-5269



Mary Honicker, IT Program Director  
[mhonicker@geisinger.edu](mailto:mhonicker@geisinger.edu)  
570-214-9438





# PA NAVIGATE

linking patients to community resources

