

PATIENT-CENTERED LANGUAGE FOR SDOH SCREENING

PA Coalition Against Domestic Violence



Our member is a network of 59 local domestic violence programs provides free and confidential direct services and survivors of domestic violence and their children in all 67 counties of the Commonwealth.

Together, local programs and the Coalition work in collaboration to deliver a continuum of services, support, and systems to help survivors find safety, obtain justice, and build lives free of abuse.

How's It Going Since We Last Talked?

- What messaging about SDOH screening are you currently using?
- How have patients responded?





Think, Talk, Tell

What do you remember from the past session about patient-centered, trauma-informed SDOH screenings?

What knowledge/awareness are you bringing into this room about Motivational Interviewing (MI)?

Motivational Interviewing Evokes Feelings Of:



Collaboration

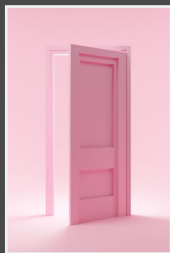


Connection

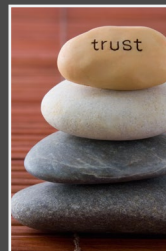


“We are in this together!”

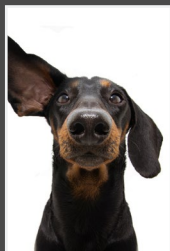
Patient Centered Questions and Responses



Open-ended
Questions



Affirm Patient
Reactions/Concerns



Utilize Reflective
Listening



Summarize

Strategies for Asking Patient-Centered, Trauma-Informed Questions

Consider the environment.

Use body language that is shows interest in what your patient is saying.

Know and explain why you are asking.

Be aware of (and address) the concerns and consequences that 'screening in' may pose for your patients.

Practice!

Use plain language that feels good for you and your patient.

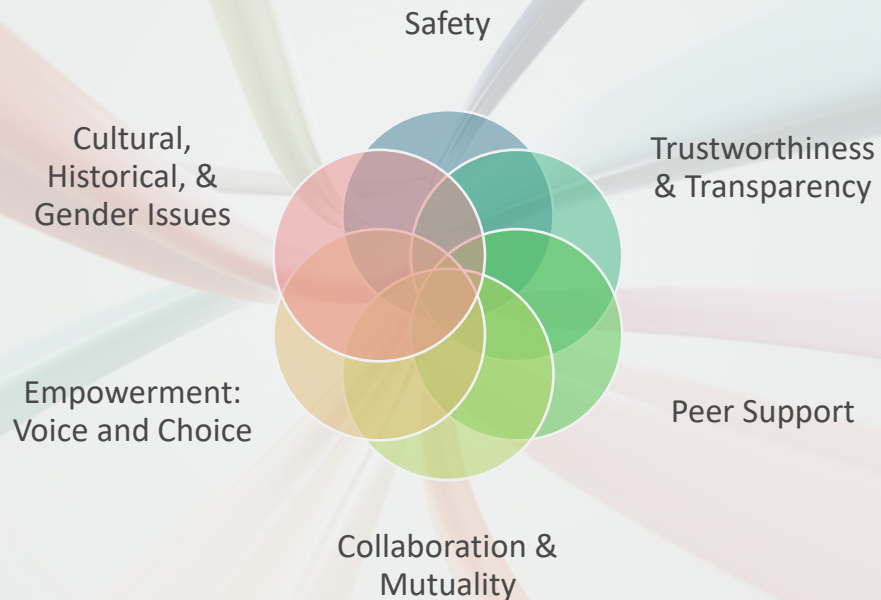
Steer clear of judgment.

Patient Centered Screening Steps

- Introduce the screening
- Ask permission to do the screen
- Give feedback on responses
- Asking what they need, know, and/or have heard
- Get permission to share knowledge
- Non-judgmental sharing
- Patient reaction to information
- Support next steps



Trauma-Informed Principles are Interconnected



A horizontal wooden plank with a natural wood grain texture is the central focus. The word "Questions?" is written in a large, black, sans-serif font across the middle of the plank. The plank is surrounded by a dense collection of colorful sticky notes in shades of yellow, pink, light blue, and light green. Each sticky note has a black question mark printed on it. The sticky notes are scattered around the plank, some overlapping it and others lying flat on the surface.

Questions?