



AT THE FOREFRONT

UChicago
Medicine

Overcoming Barriers in Pancreatic Cancer Care in Diverse Populations

Sonia S. Kupfer, MD

Pancreas Fest 2022

July 22, 2022



@SoniaKupfer

Conflicts

Nothing to disclose

Objectives

- *Define* health equity & disparities
- *Review* disparities in pancreatic cancer care continuum
- *Identify* interventions to address disparities

Outline

- Health equity & disparities
- Disparities in PDAC care continuum
- Interventions to address disparities

Health equity & disparity

Equity

- Every person has the opportunity to “attain his or her (their) full health potential”

Disparity

- Unfair health differences that adversely affect groups of people

Race/ethnicity

Sex

Sexual identity

Age

Disability

Socioeconomic
status

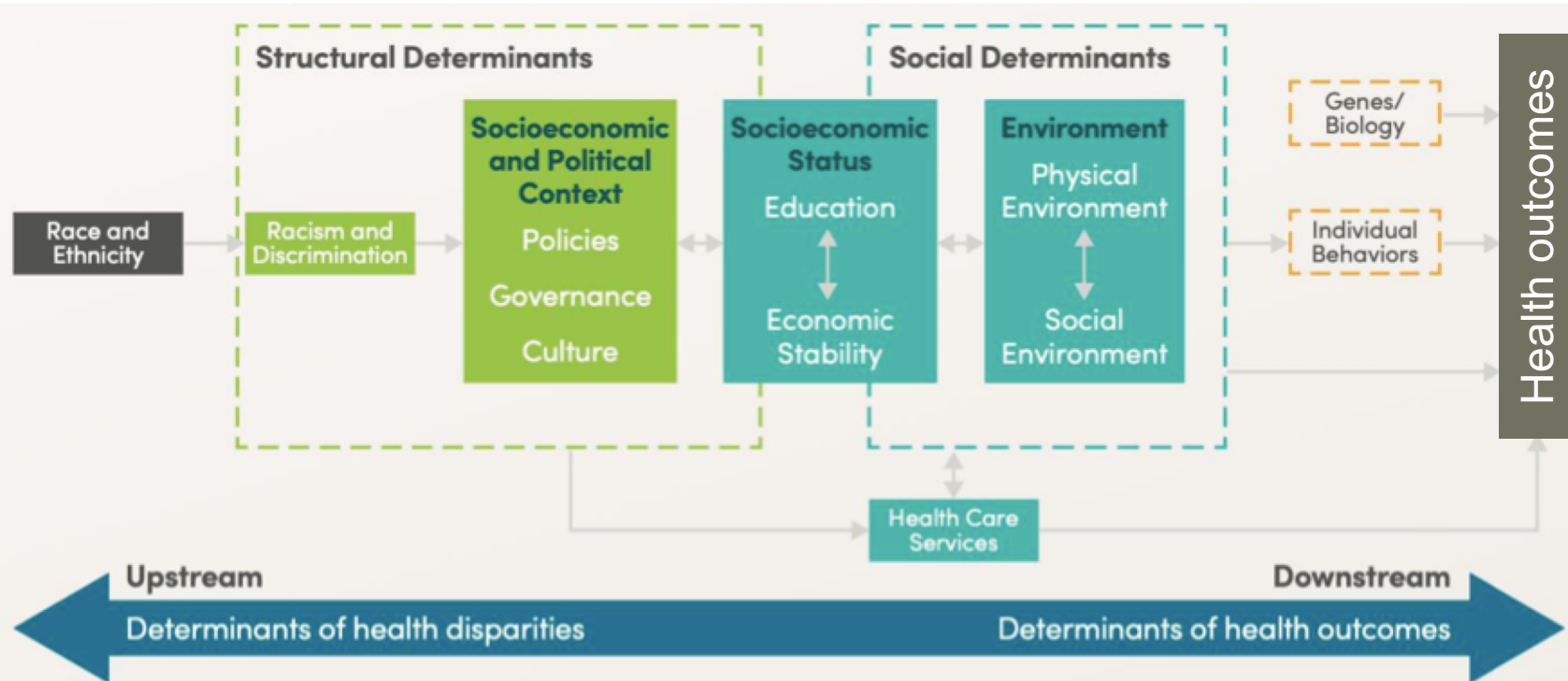
Geographic
location



AT THE FOREFRONT

UChicago
Medicine

Root causes of race/ethnicity disparities

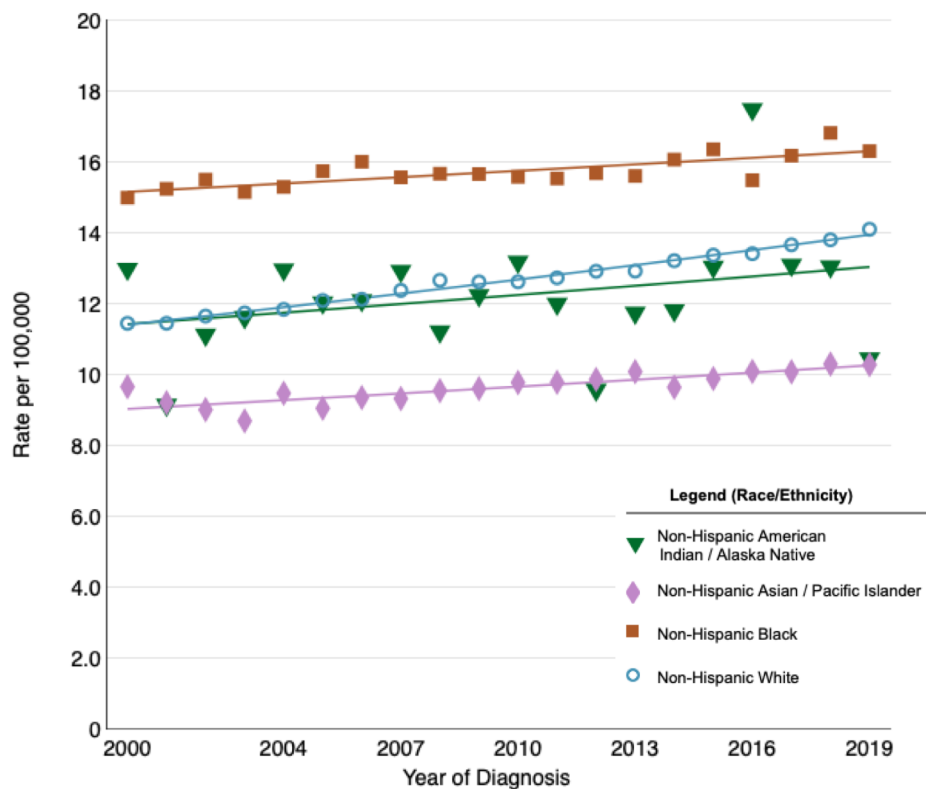


Outline

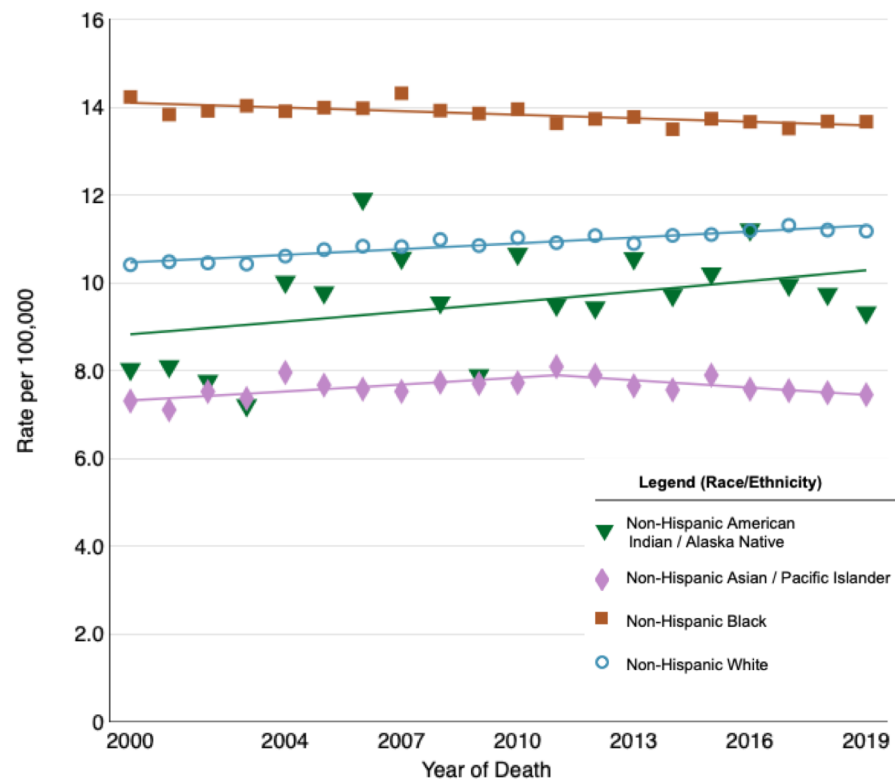
- Health equity & disparities
- Disparities in PDAC care continuum
- Interventions to address disparities

PDAC age-adjusted incidence & mortality in US by race/ethnicity 2000-2019

Incidence



Mortality

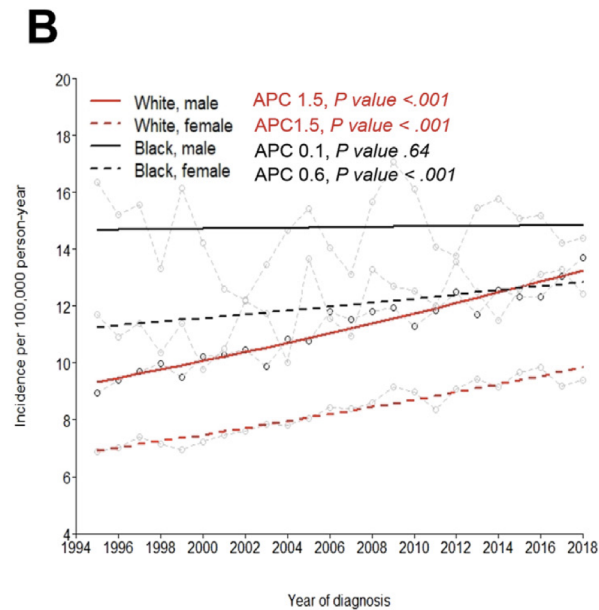
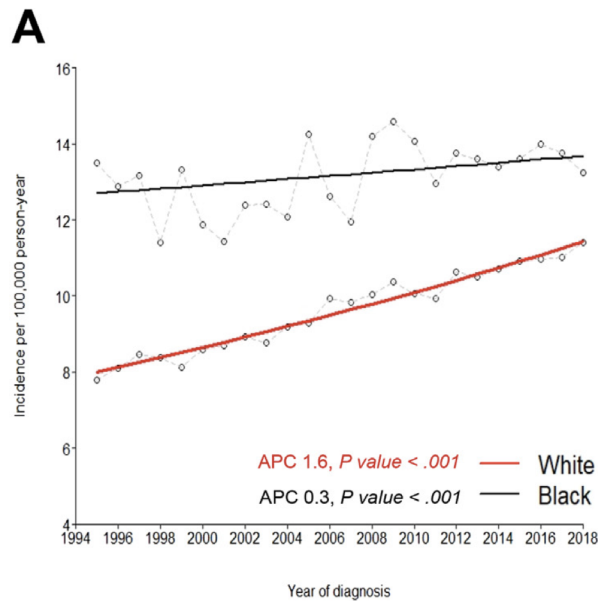


Created by <https://seer.cancer.gov/statistics-network/explorer> on Sun Jul 10 2022.

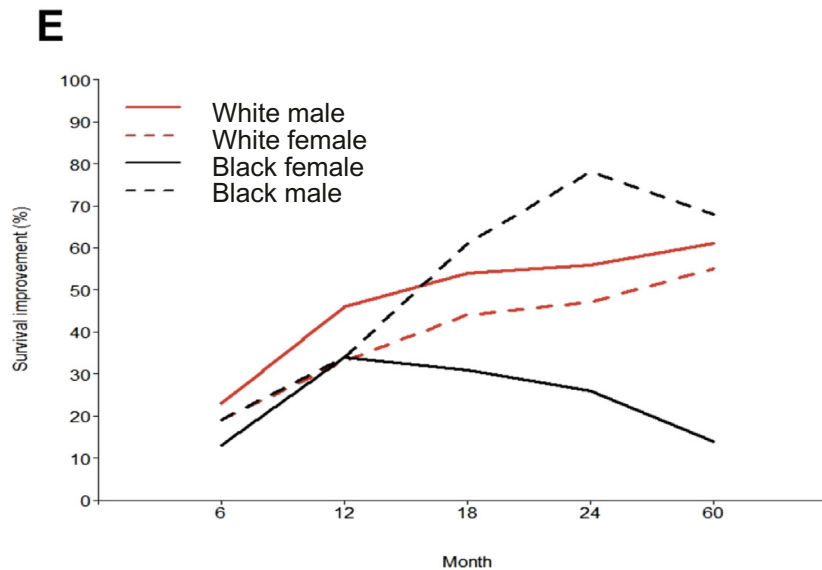
Created by <https://seer.cancer.gov/statistics-network/explorer> on Sun Jul 10 2022.

Recent incidence & survival trends

Incidence



Survival



Amirian H et al *Gastroenterol* 2022

Do risk factors explain differences?

■ Cancer Prevention Study II¹ (1984-2004)

- Population attributable risk for *smoking, family history, diabetes, cholecystectomy, overweight/obese*
 - 24.3% in Whites and 21.8% in Blacks

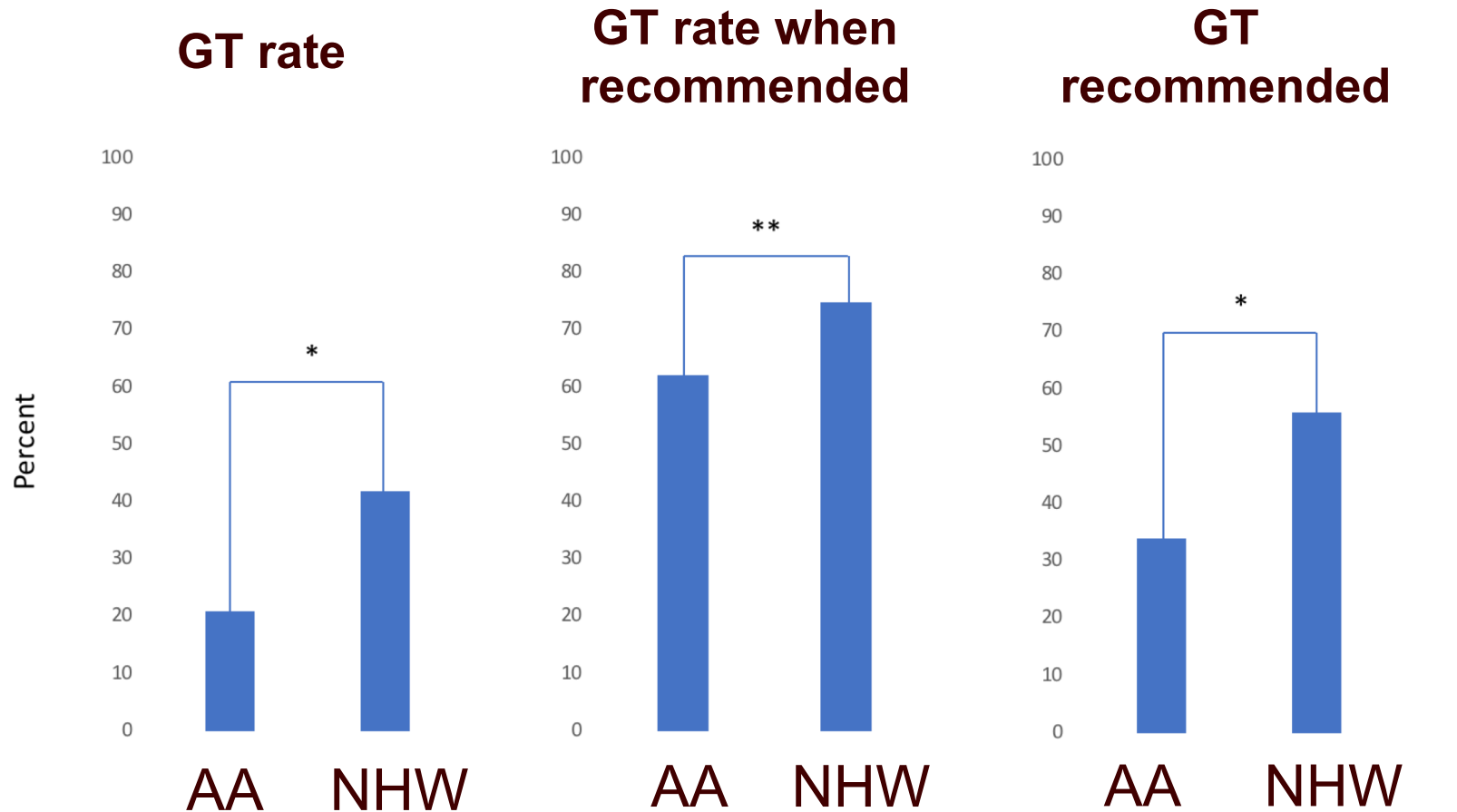
■ SEER-Medicare² (1992-2011)

- Stage 1-3: ↑ mortality in Blacks & Hispanics
- Stage 4: no difference btw Black, Hispanics, Whites
- Adjusted for *stage, comorbidities, year of diagnosis, region, tumor location and grade, treatment, marital status, urban location*

¹Arnold L et al *CEBP* 2009

²Nipp R et al *Cancer Medicine* 2018

Is universal genetic testing in PDAC equitable?

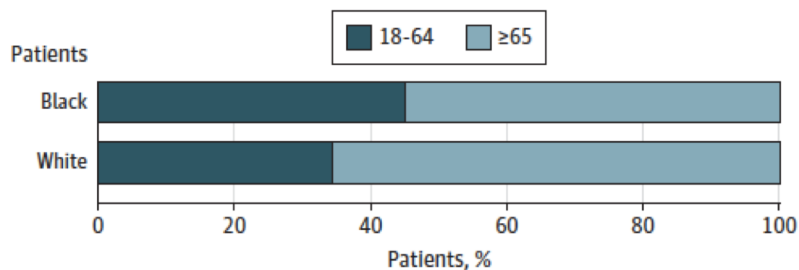


* $p < 0.0001$; ** $p = 0.08$

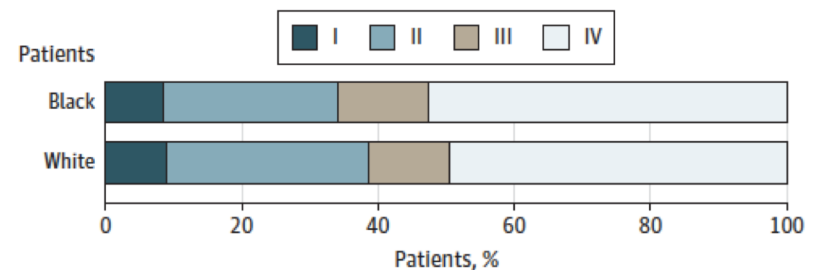
Do differences at diagnosis explain worse outcomes in Black patients?

Figure 2. Age and Stage at Presentation, Burden of Comorbidity, and Treating Facility

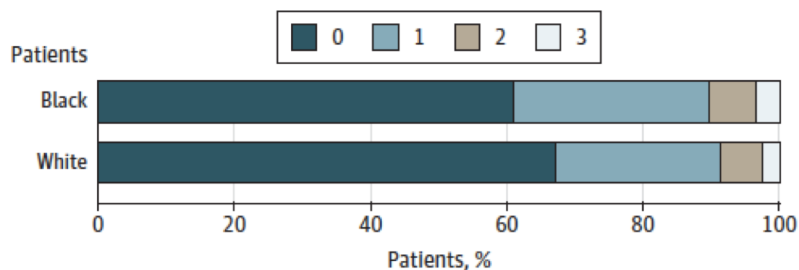
A Age at diagnosis



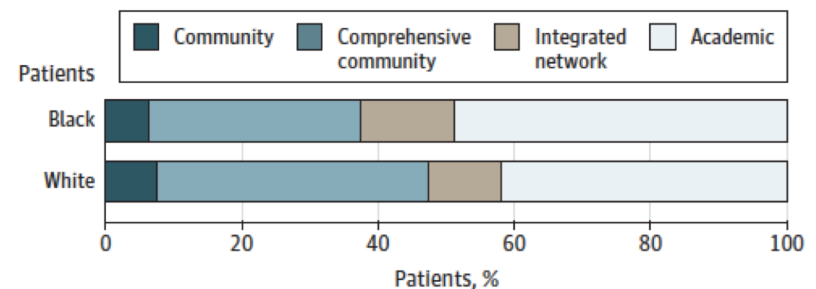
B Stage at diagnosis, AJCC 8th edition



C Charlson-Deyo Comorbidity Index



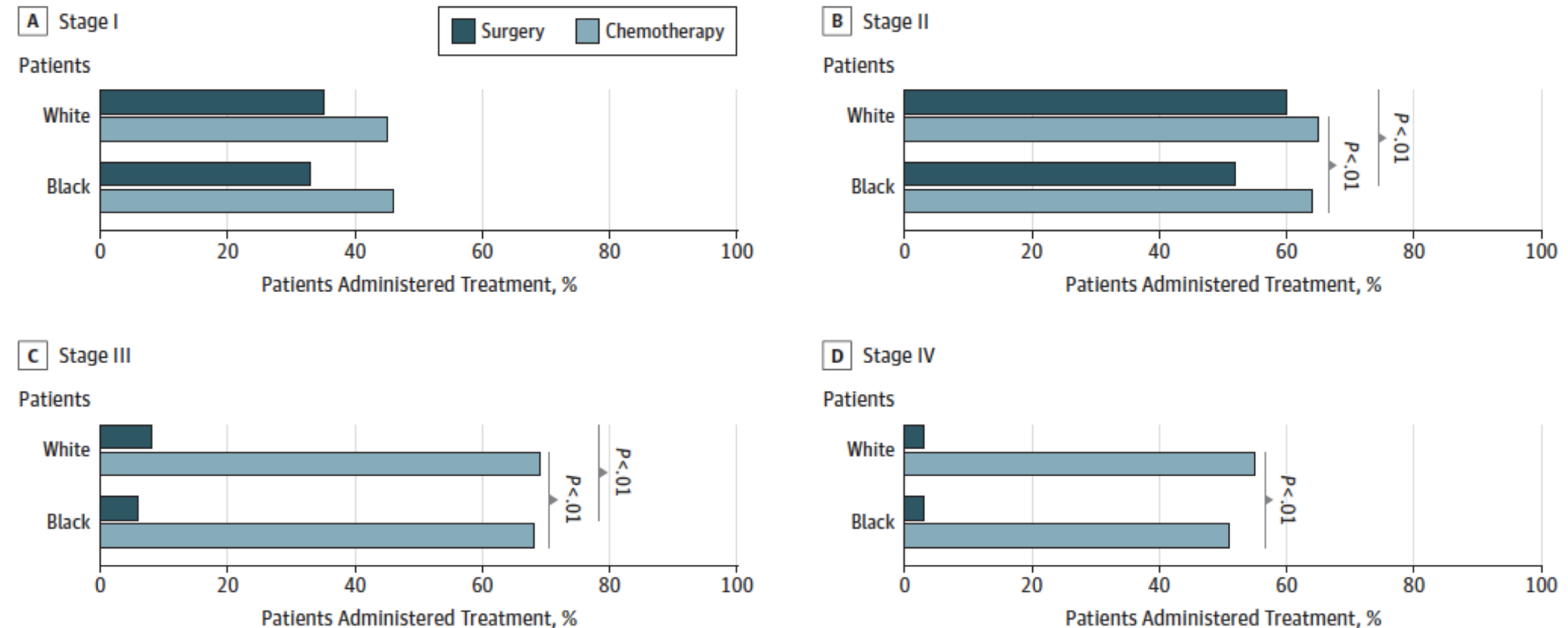
D Treating facility



Heller D et al *JAMA Surgery* 2020

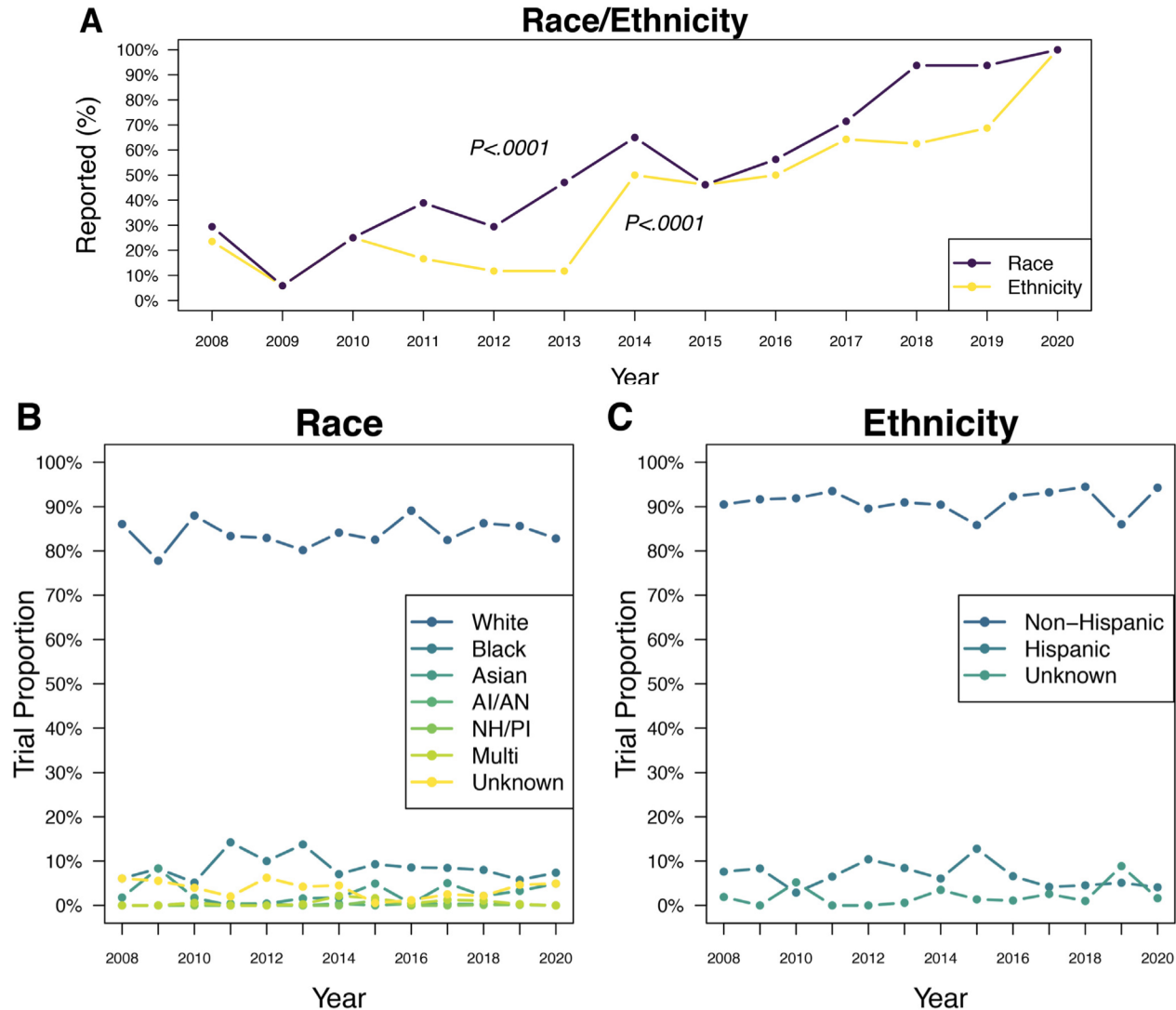
Do treatment differences explain worse outcomes in Black patients?

Figure 3. Treatments Administered at Each Disease Stage



Heller D et al *JAMA Surgery* 2020

Is clinical trial participation equitable?

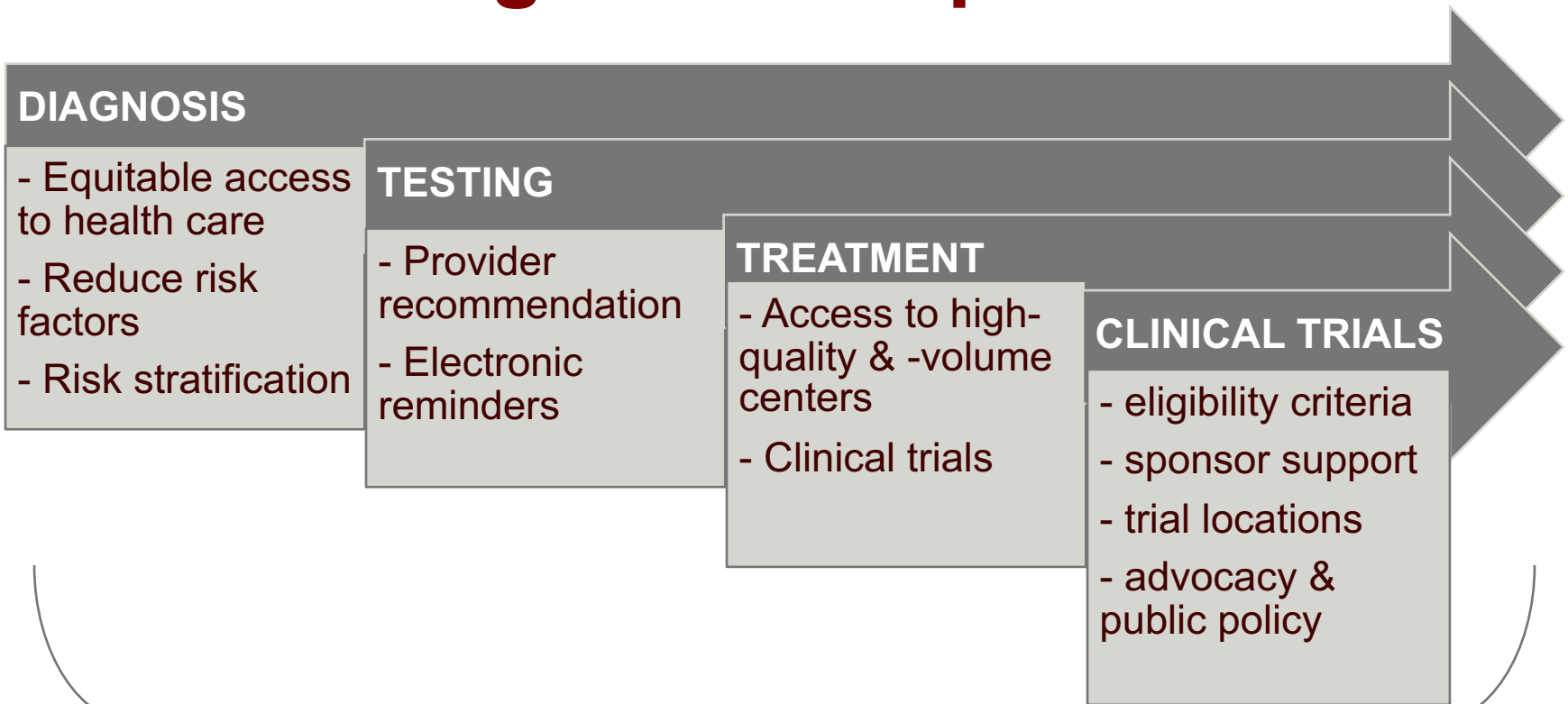


Herremans K et al *Gastroenterol* 2021

Outline

- Health equity & disparities
- Disparities in colorectal cancer & screening
- Interventions to address disparities

Overcoming PDAC disparities



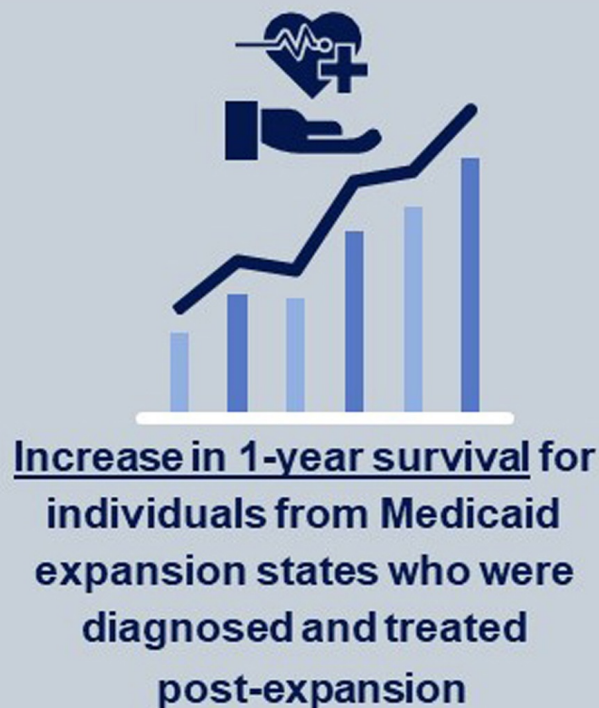
Provider & workforce diversity
Workforce training in implicit bias
Legislation & policies addressing structural racism and barriers

Impact of Medicaid Expansion

Impact of Medicaid Expansion on Pancreatic Cancer: An Examination of Sociodemographic Disparity in 1-Year Survival

National Cancer Institute
Surveillance, Epidemiology, and End Results Program

Adults aged 18-64 y diagnosed with pancreatic cancer from 2007-2012 (n = 35,347)



The positive association of Medicaid expansion and survival was not observed across all levels of key covariates:



Black race

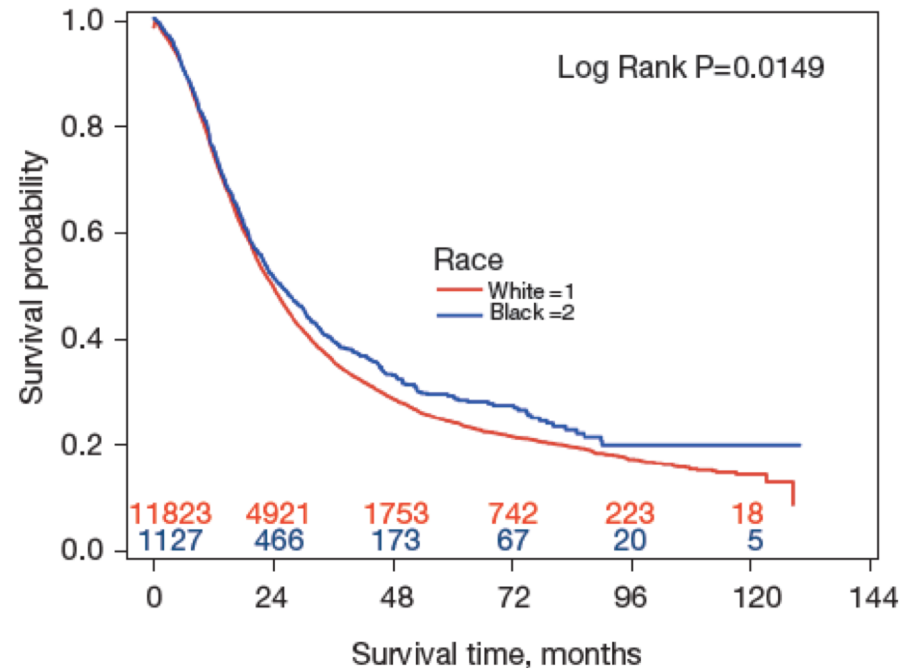


Uninsured

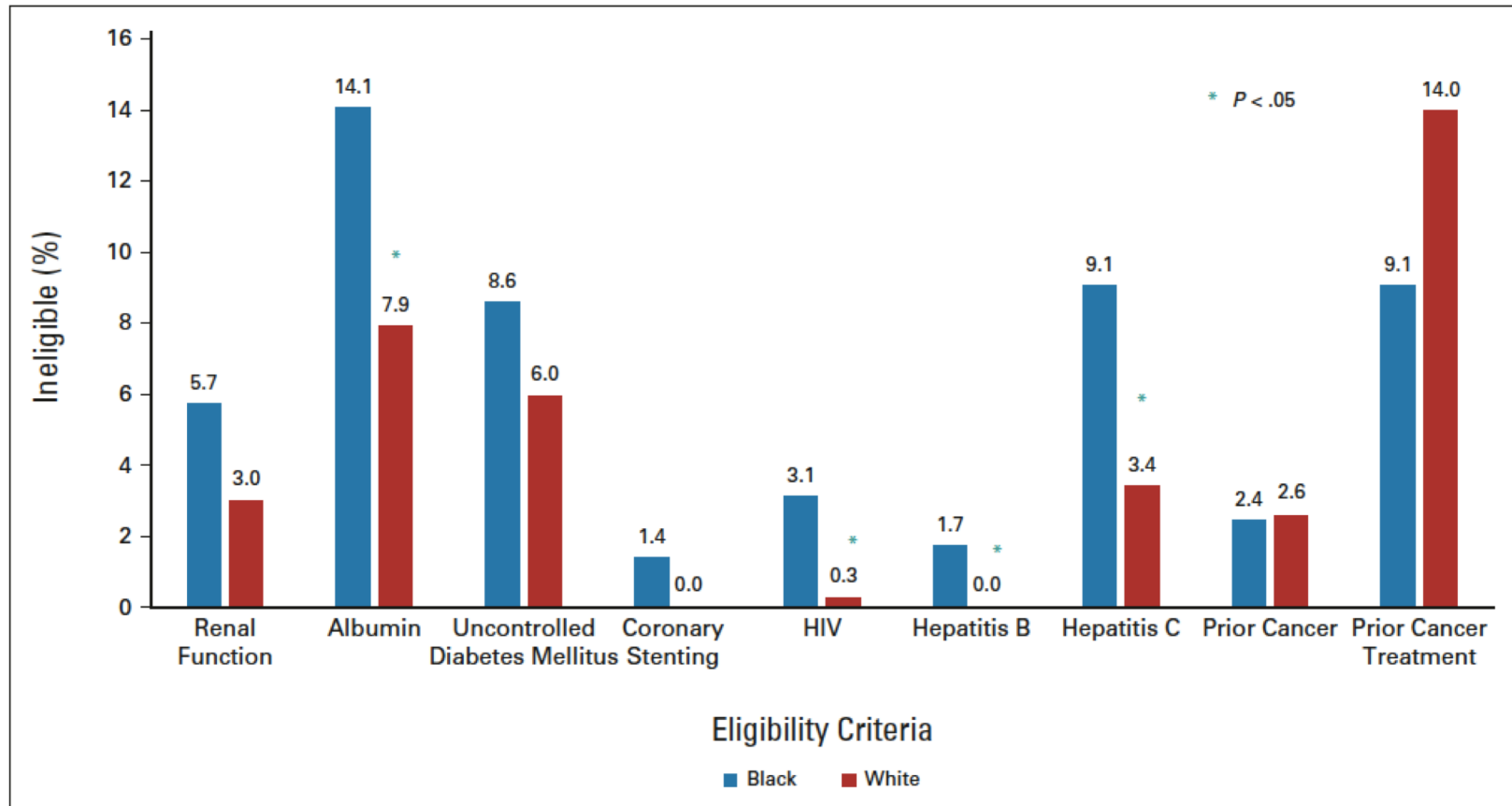


Treatment at high-volume centers

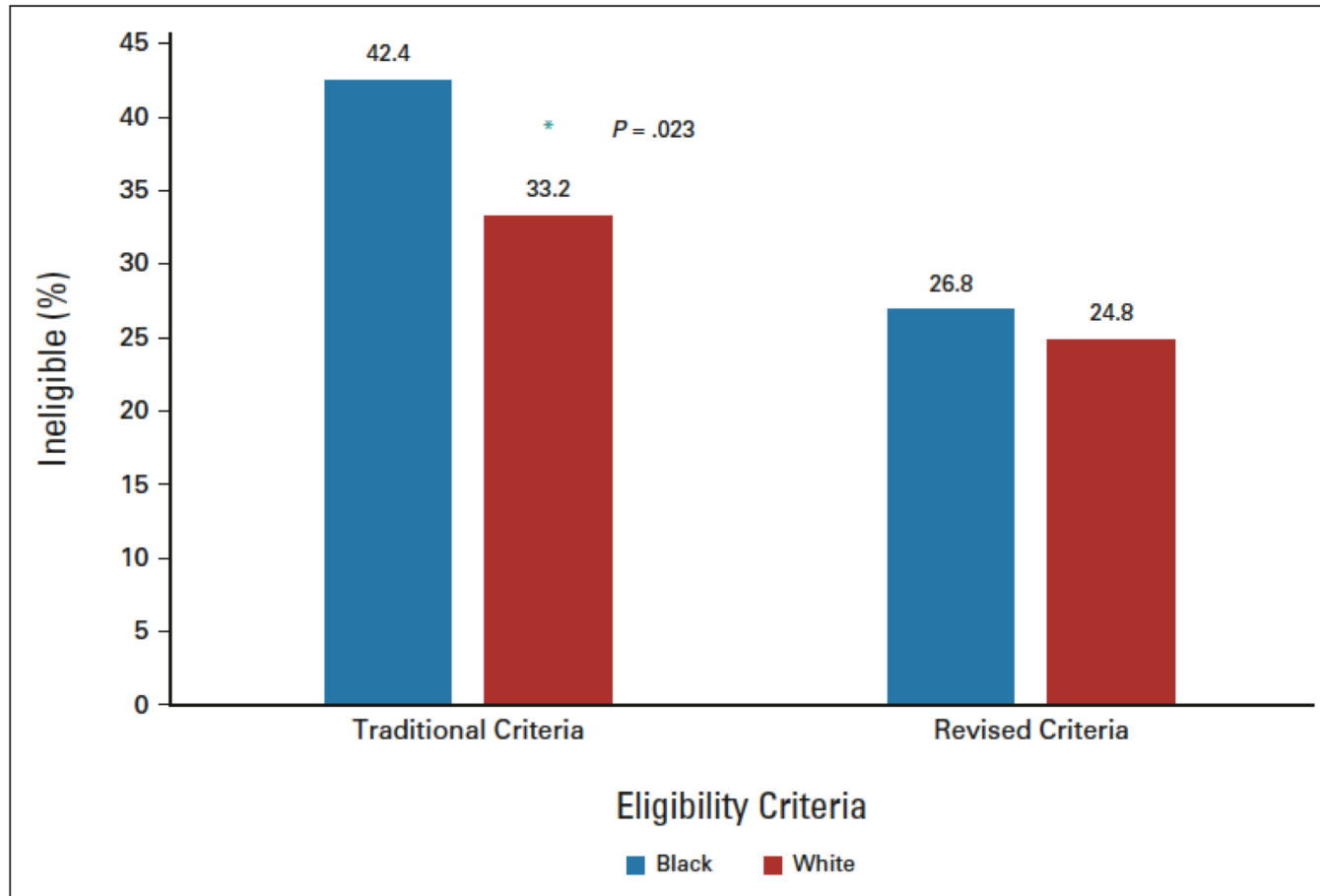
17% ↓ rate of treatment @ high-volume center & surgeon in Black patients¹



Review of trial eligibility criteria



Review of trial eligibility criteria



Take home points

- Social & structural determinants of health important in disparities
- PDAC disparities along care continuum
- Achieving equity requires multicomponent interventions



AT THE FOREFRONT

UChicago
Medicine

Thank you